

FORESTA 7

BUSINESS LOFT



MASTER PLAN



MASTER PLAN

PHASE I

(completed in 2007)

Total area: 1.500 hectares

Existing : Residential, Ocean Park, German Center, Sunburst CBD Office Park, BSD Junction, ITC BSD dan Pasar Modern

Residential
& East CBD

More than 10.000
unit residential

More than a hundred
educations facilities

Industrial &
Warehouse

Toll Road, Hospital,
Traditional Market &
others facility



MASTER PLAN

PHASE II

(starting on 2008)

Total area: 2.000 hectares

Development : Residential area, Saveria Apartment, Casa de Parco Apartment, BSD Green Office Park, CBD, AEON Mall, Indonesia Convention Exhibition (ICE), Foresta Business Loft, The Icon Business Park, Edutown, Prasetiya Mulya Business School, Swiss German University, etc

Residential & Central CBD

More than 15.000 unit residential

AEON Mall, ICE, Green Office Park, The Breeze, Qbig, Business Loft, etc

Future Toll Road & Intermoda

Atma Jaya university, Prasetiya Mulya University, IULI



MASTER PLAN

PHASE III
(will be start on 2020)
Total area: 2.500 hectares

Future Development
More than 2500 ha

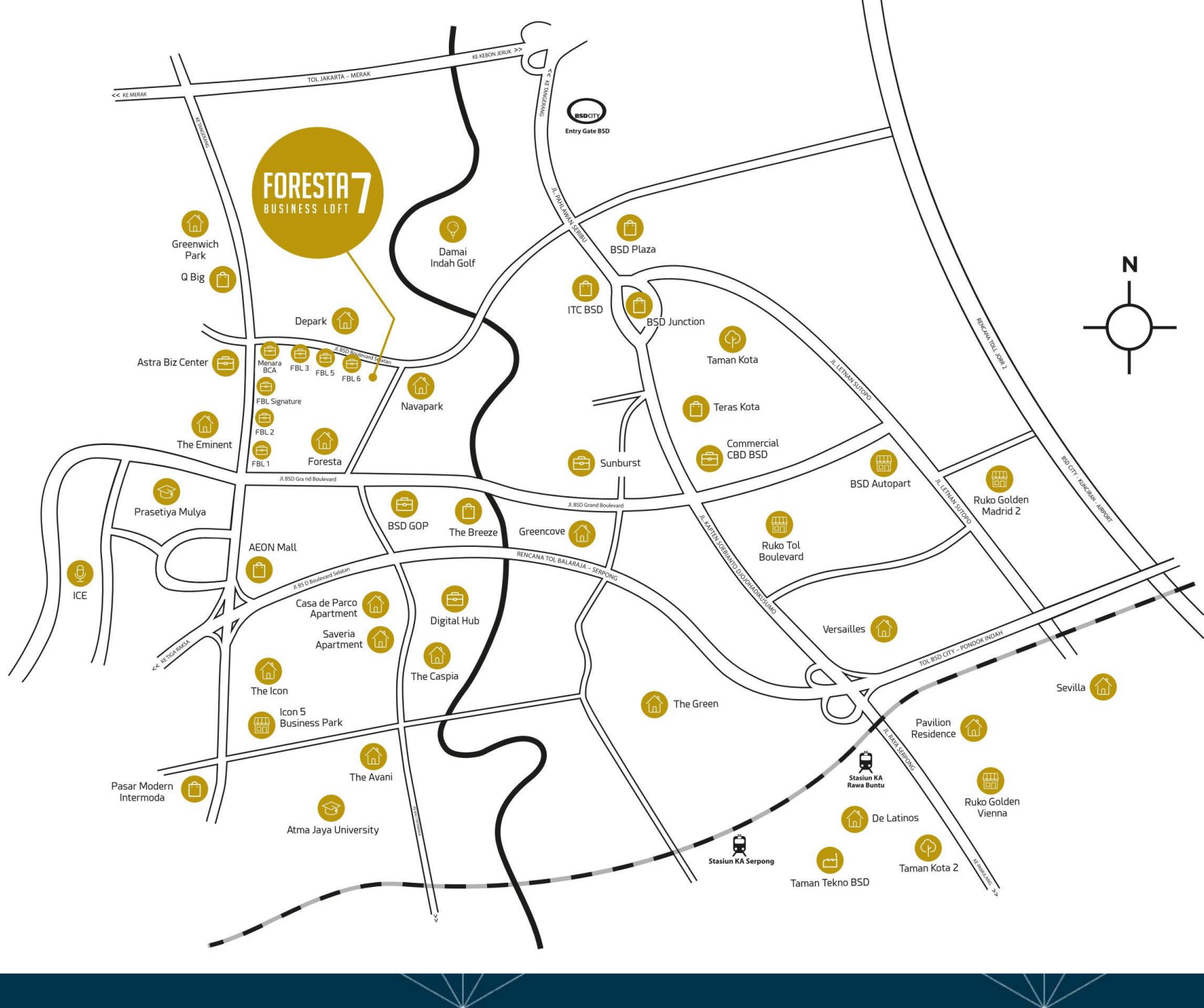


FORESTA 7

BUSINESS LOFT

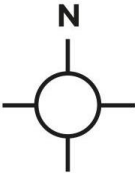


LOCATION



FORESTA 7
BUSINESS LOFT

BSD CITY
Entry Gate BSD



The Final Phase of Premium Business Series Complex at Foresta



6,910 Square meters land

Only 18 Units





Double
Volume
Corridor

DOUBLE
DECK
PARKING





PRIVATE PARKING & COURTYARD

5 DROP-OFF
POINTS



SEPARATE
ENTRANCE
FOR EACH
FLOOR





PENTHOUSE WITH
ELEVATOR UNIT



ELEVATOR FOR TYPE A

FORESTA 7
BUSINESS LOFT

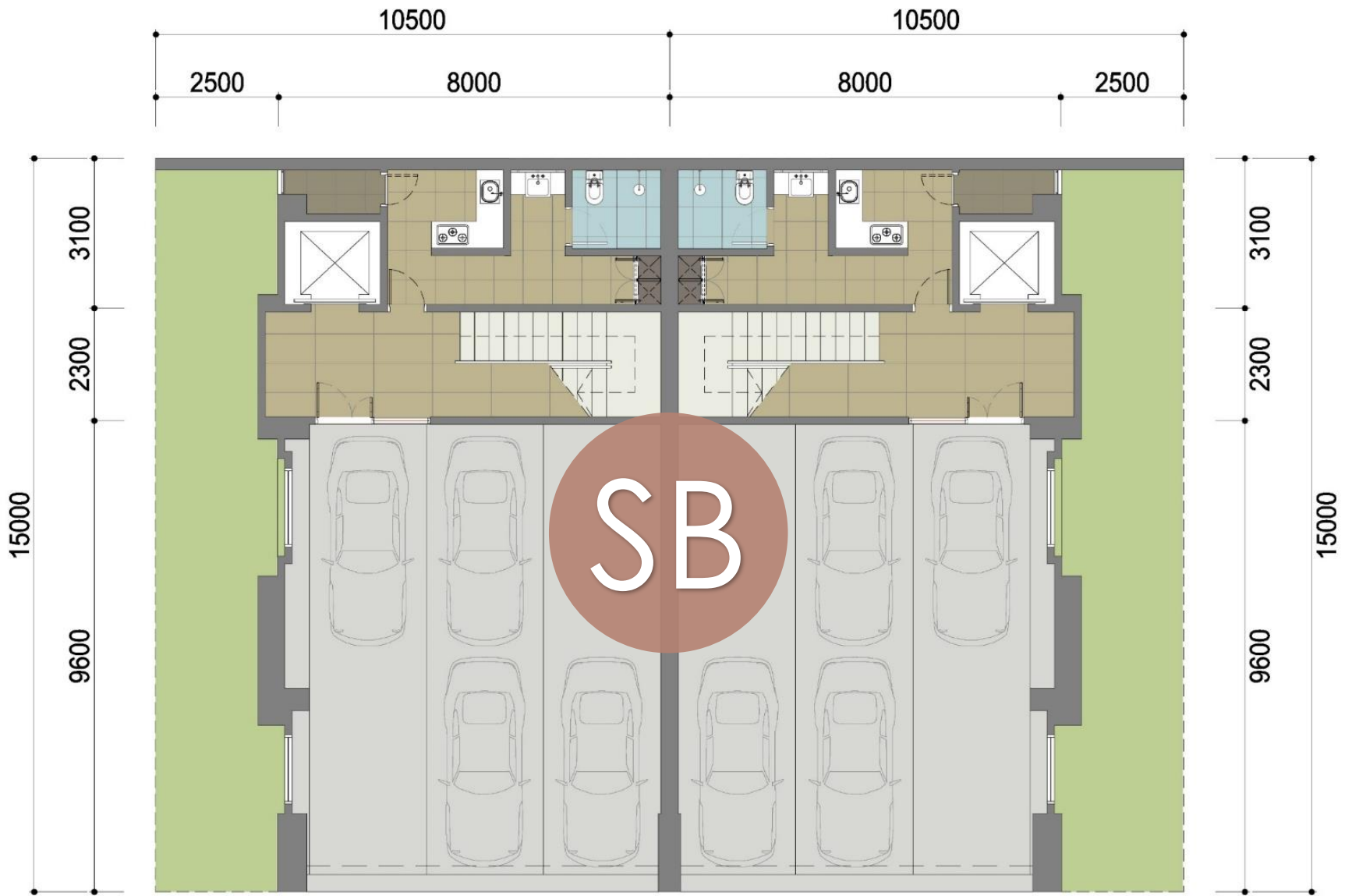
ONE PLACE
FOR
MULTIBUSINESS



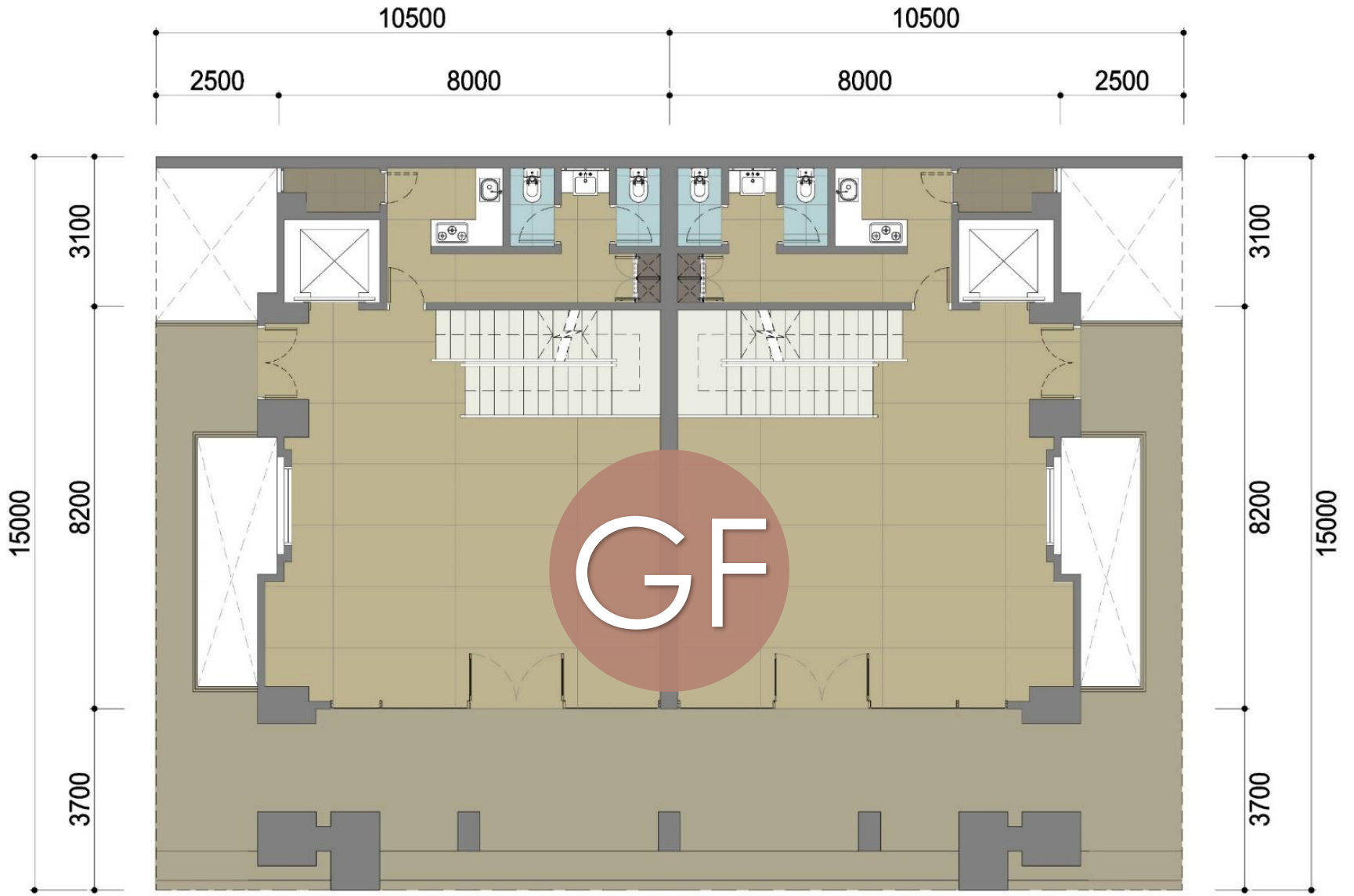
SITE PLAN

FORESTA7
BUSINESS LOFT

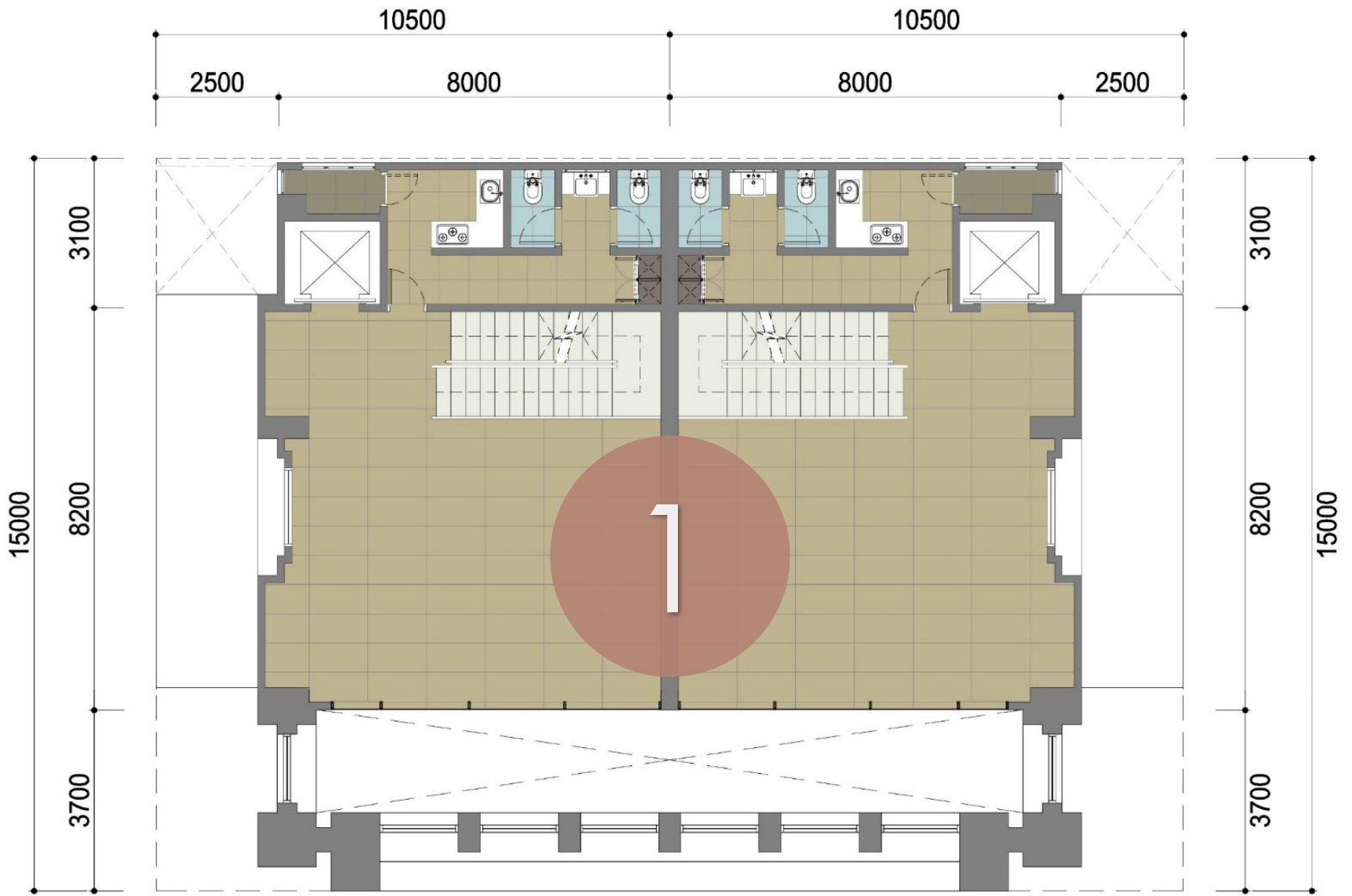




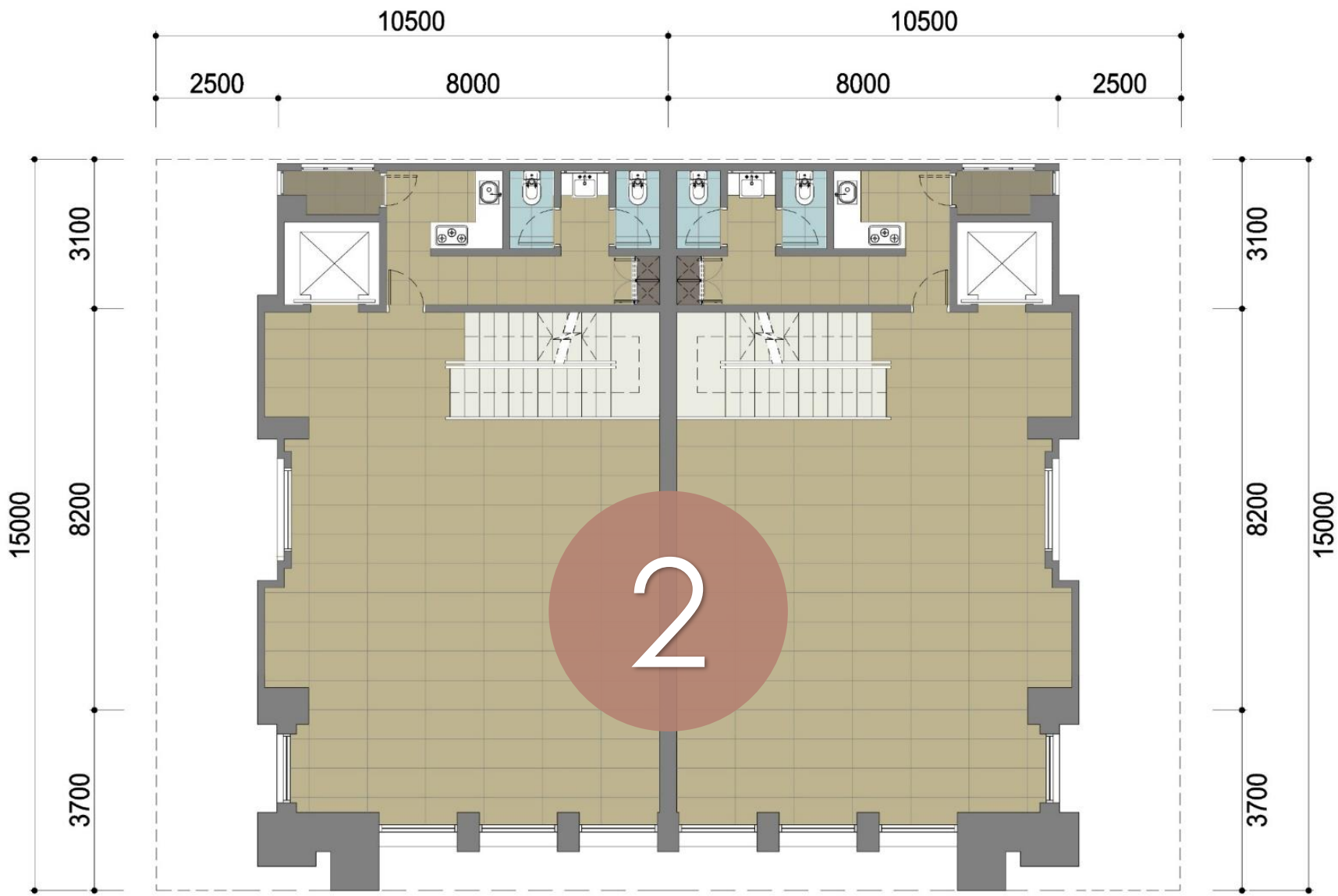
TYPE A - LOWER GROUND



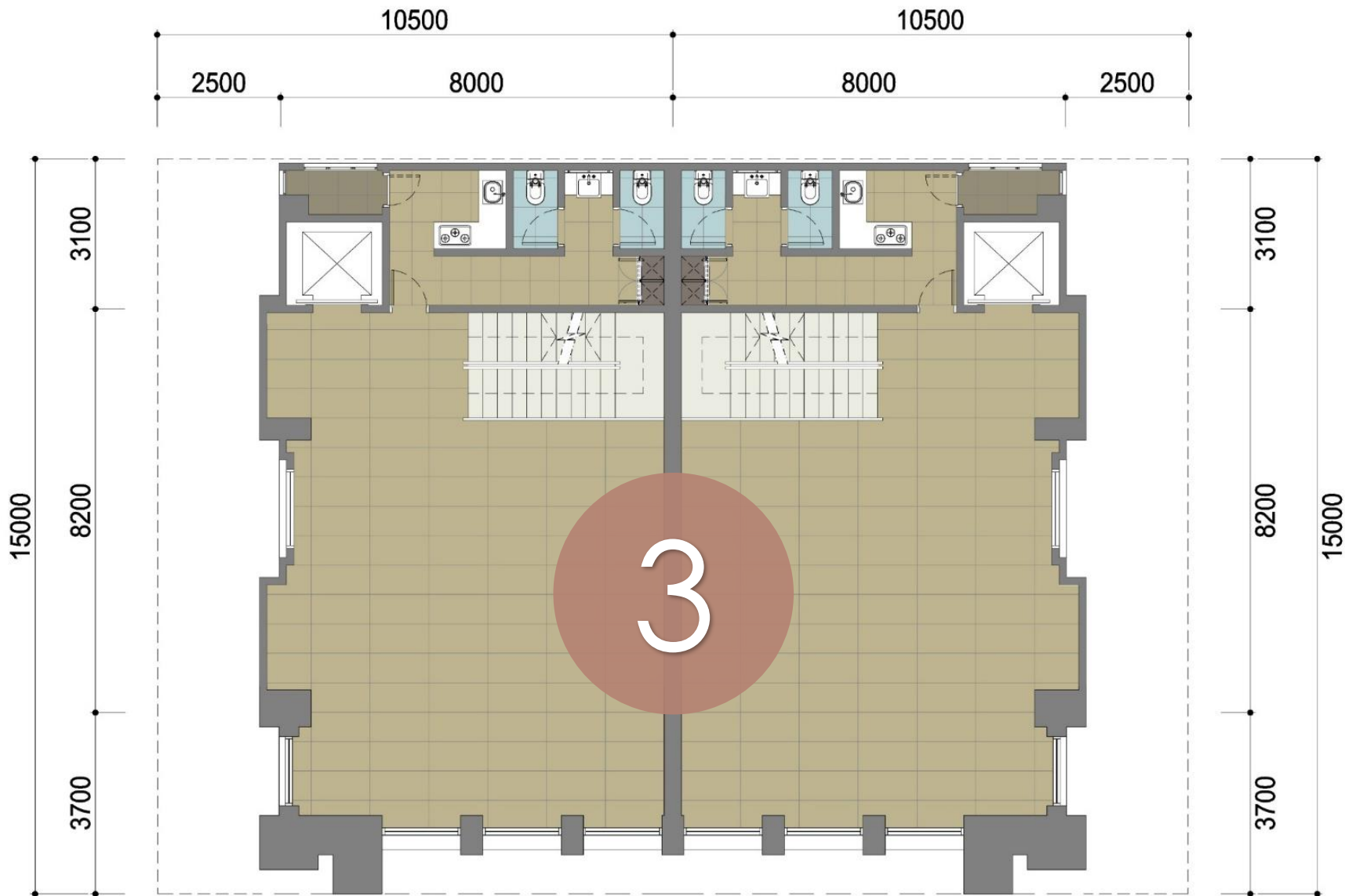
TYPE A - GROUND FLOOR



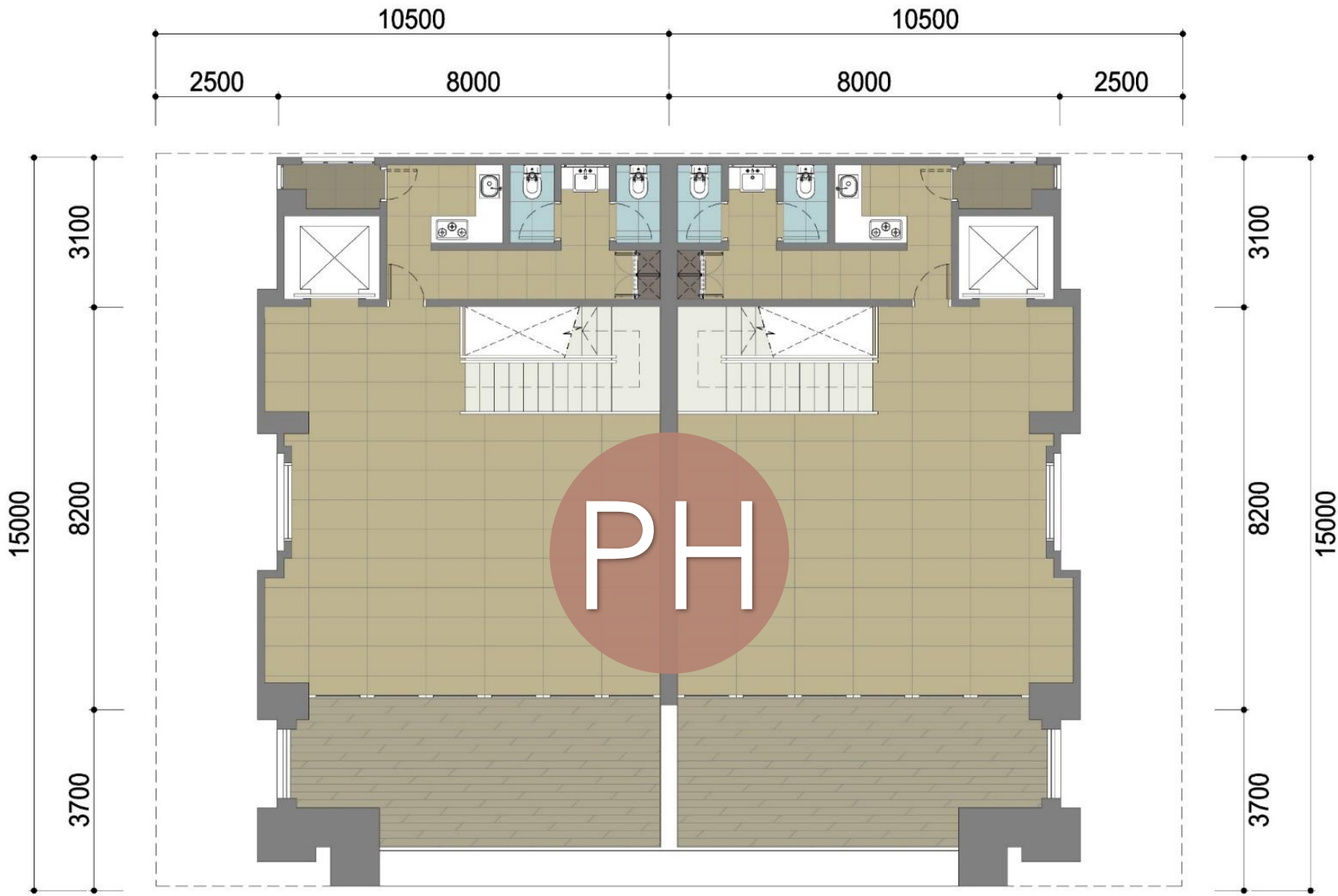
TYPE A - 1st FLOOR



TYPE A - 2nd FLOOR



TYPE A - 3rd FLOOR



TYPE A - PENTHOUSE FLOOR

Pondasi	: Tiang Pancang
Struktur Utama	: Beton bertulang
Dinding	: Bata ringan
Plafon	: Gypsum board
Atap	: Zincalume
Pintu Utama	: Kaca Tempered
Fasade	: Kaca dan Batu alam
Lantai	: GF : Marmer slab lokal Lt. 1,2,3, Penthouse : Homogenous tile Lt. LG : Homogenous tile, keramik (parkir)
Saniter	: Toto / American Standard / setara
Lift	: Tersedia untuk bangunan Tipe A (kapasitas 6 orang)
Telepon	: 1 Jaringan
Air	: PAM
Listrik	: 13.200 VA

SELLING POINT

- STRATEGIC LOCATION
- THE FINAL PHASE AT FORESTA
- GOOD NEIGHBORHOOD
- MAIN BOULEVARD ROW 30
- ONLY 18 UNITS
- OFF STREET PARKING
- PRIVATE PARKING
- DOUBLE VOLUME CORRIDOR
- 5 DROP OFF POINTS
- SIDE GARDEN
- MARBLE SLAB AT GF
- ELEGANCE & FORMAL DESIGN
- DOUBLE DECK PARKING
- SEPARATE ACCESS ON EACH FLOOR
- ELEVATOR FOR TYPE A
- ONE PLACE FOR MULTIBUSINESS
- BUILT-IN KITCHEN CABINET
- COLOUMN FREE AREA
- SPACIOUS SPACE
- HIGH CEILING