

*the*  
**ZORA**

BEAUTY OF BALANCE



こんにちは BSD

---

KONNICHIIWA BSD



BSD DIAMOND  
DEVELOPMENT





## ABOUT THE JOINT VENTURE

---

Joint Venture of TREI TANGERANG REALTY INVESTMENT  
a subsidiary of Mitsubishi Corporation



BSD DIAMOND  
DEVELOPMENT

### RESIDENTIAL

---

KEIA  
Kimora  
Kazumi  
Kiyomi

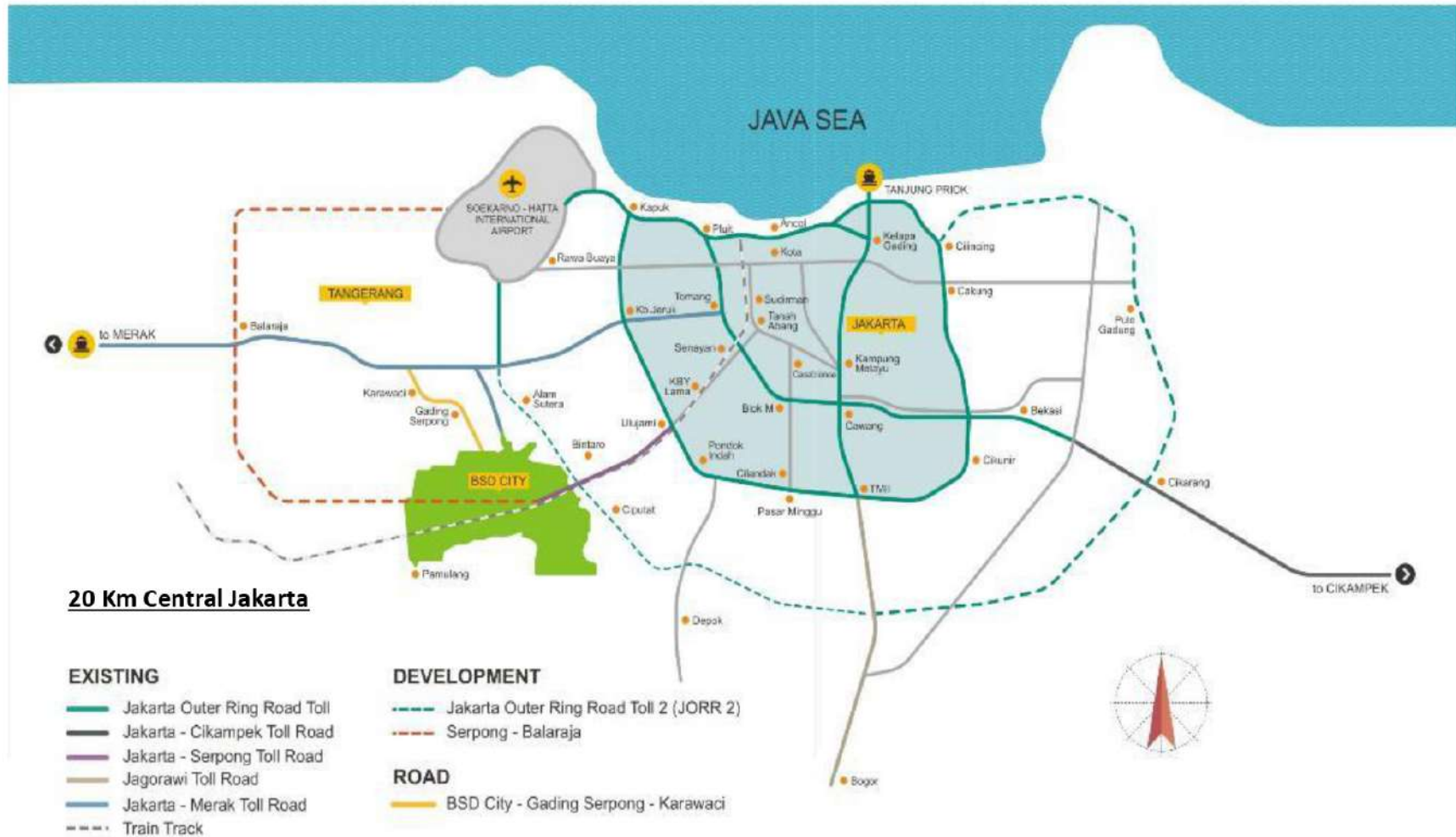
### COMMERCIAL

---

DAIKANYAMA  
Commercial Business Living AT ZORA  
THE FIRST  
COMMERCIAL AREA  
AT THE ZORA

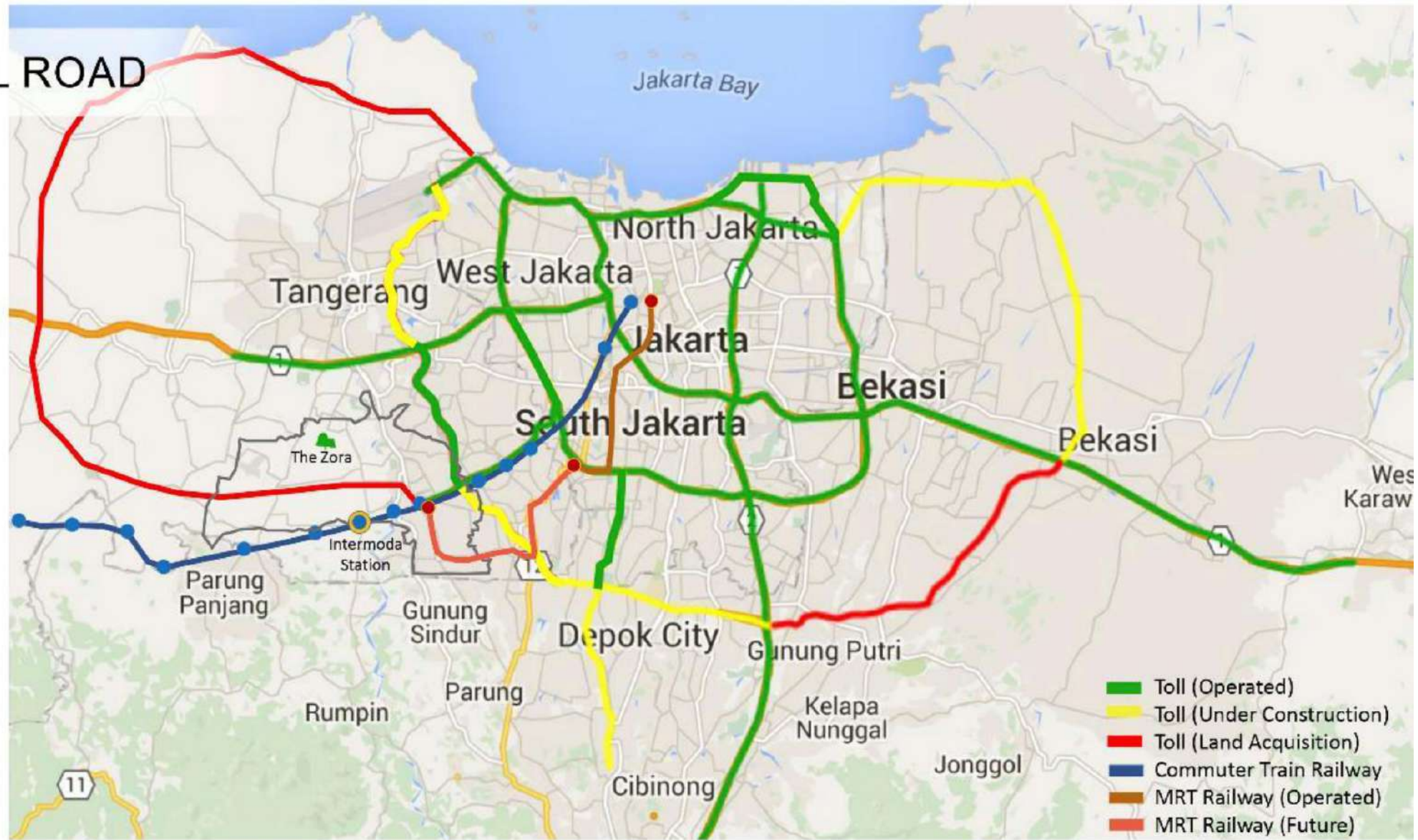
# Accessibility

BSD City is rapidly transforming into a regional hub, connecting cities and towns such as Jakarta, Tangerang, Serang, Bekasi, Depok and Bogor.





# TOLL ROAD







# WHY *the* ZORA

- Reputable Developer + Global Network Investor
- Management Expertise (Japanese Technology + Property Know - How)
- Easy Multi Access
- Strategic Location
- Largest Township Development



# SHOPPING CENTER





ONE STEP AWAY FROM  
**HEALTH CENTER**



# EDUCATION

FOR BELOVED ONE



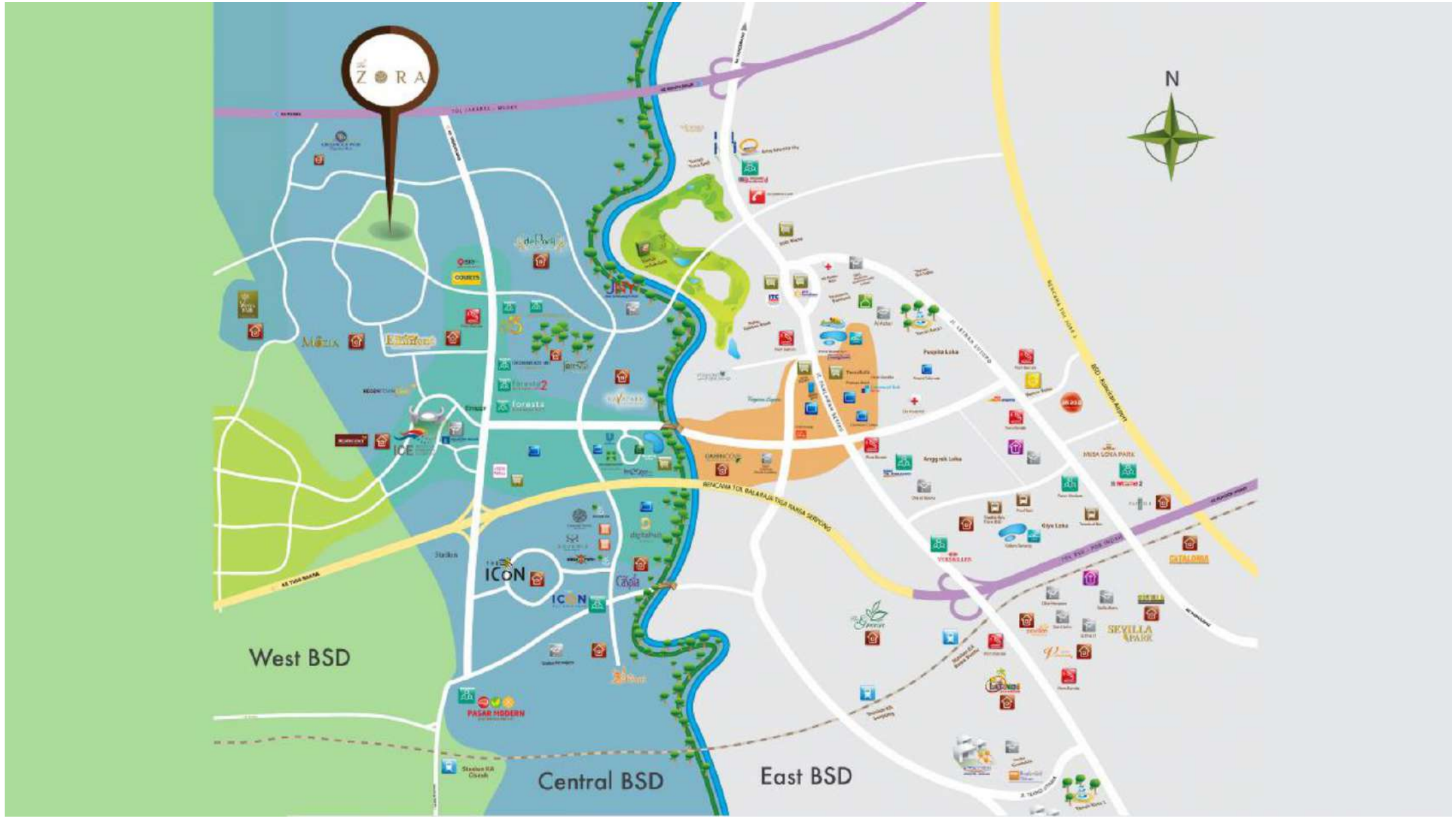




Intermoda BSD City











Conveniently Exclusive Residential  
at Premium area in BSD City



# SAMASANA CLUBHOUSE



Lounge



Marketing Gallery



Premium Gym

Kids Room



Onsen Pool



Kiyomi





# SITE PLAN



the  
**ZORA**  
BEAUTY OF BALANCE

Kiyomi



**SITE PLAN**  
**12, 10, 9, & 8+**

# Providing a Well Designed Community with The Best Quality



## ENERGY CONSERVATION

Low-E Glass



PT ASAHIMAS FLAT GLASS Tbk

AG Group



## HOME ELEVATOR



mitsubishi  
ELECTRIC



## BATHROOM AND KITCHEN



## SMART HOME



TYPE 12 STD  
BA/LA 430/240

NEW RELEASE  
MASTERPIECE  
PRODUCT | WITH  
LIMITED  
UNIT





# TYPE 12 CORNER





# FLOOR PLAN

Type 12 Standard

## Level 1



## Level 2



## Level 3



-   
 2 Master Bedrooms  
with Ensuite Bathroom
-   
 2 Kids Bedrooms  
with Ensuite Bathroom
-   
 4 Bathrooms
-   
 2 Bathtubs
-   
 1 Powder Room
-   
 1 Family Hall
-   
 1 Living Room
-   
 2 Walk-in Closet  
Space
-   
 1 Wet Kitchen  
1 Dry Kitchen
-   
 2 Balconies
-   
 1 Elevator
-   
 2 Storage  
Rooms
-   
 4 Carparks

# KIYOMI T12 INTERIOR



Living Room



Sanitary Room



Dining Room



Master Bed Room



# KIYOMI T10 INTERIOR



Living Room



Balcony



Villa Floor



Kids Room



TYPE 9 STD  
BA/LA 275/153

NEW RELEASED  
SMART PREMIUM  
HOUSE

WITH  
LIMITED  
UNIT





# TYPE 9 CORNER



# FLOOR PLAN

Type 9 Standard

Level 1



Level 2



Level 3





# KIYOMI T9 INTERIOR



Living Room



Master Bed Room



TYPE 8+ STANDARD  
BA / LA 235/136





# FLOOR PLAN

## Type 8+ Standard





# Smart Home Features



**TRIPLE Security**  
lock door system



**Panic button**



**Smart home system**



**Connect to your mobile phone:**  
Home Security Camera  
and Lighting Switch

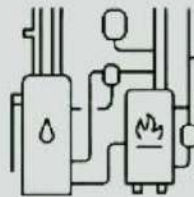


**CCTV System**



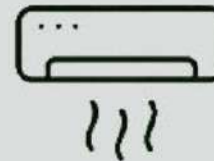
**Internet ready**

## Special Features \*



### Hot Water Piping

Connected To a Wet Kitchen That  
Makes The Kitchen More  
Comfortable To Use



### AC In All Bedrooms

No Need To Bother, Because  
Every Bedroom Installed Air  
Conditioning That Makes The Air  
In The Room Fall Cool

\*TERMS & CONDITIONS APPLIED



# General Highlights

- 2 Entry Gates: Minami & Kita Gate
- Half Kilometres green spines & 5 KM Pedestrian/Jogging Track/Bicycle Track
- Festive Gardens (Ohana, Nami, Hanabi, Hoshi, Kizuna) and Samasana Club House
- 3 Community Parks
- All Houses Have North-South Orientation
- Total Area 19 ha

**Smart environmental sustainable planning, walkable community, multiple themed gardens with facilities for different age groups or end users of the community, tri-generation living.**



# Pricelist

Type	Land Area	Building Area	Price
12	240	430	11.640.000.000*
10	200	350	8.923.655.000*
9	153	275	6.603.119.000*
8+	136	235	5.607.927.000*


\* Terms & conditions apply


\* Prices can change at any time without prior notice


the  
**ZORA**  
BEAUTY IN BALANCE



# HOME OF JAPANESE BLISS

 Hi-Tech

 Hi-Specs

 Hi-Quality

START FROM

# 5M-AN



**BSD DIAMOND  
DEVELOPMENT**

Joint Venture of **TREI** TANGERANG REALTY INVESTMENT  
a subsidiary of  Mitsubishi Corporation



**sinar mas land**  
Building for a better future



the  
**ZORA**  
BEAUTY OF BALANCE



## #STAYATHOMEGIFT FROM THE ZORA

Spesial Untuk Kamu  
Yang Dirumah Aja Dapatkan:

- ✔ LIBUR BAYAR
- ✔ CICILAN PANJANG
- ✔ CASHBACK HINGGA 20 JUTA

+ XTRA GIFT  
TOTAL  
**50 JUTA\***



\*SYARAT & KETENTUAN BERLAKU



**BSD DIAMOND  
DEVELOPMENT**

Joint Venture of **TREI** TANGERANG REALTY INVESTMENT  
a subsidiary of  Mitsubishi Corporation



**sinar mas land**  
Building for a better future

# Smart Investment

- Home Elevator (T10 & T12 Kiyomi)
- Smart Home
- Wet Kitchen & Dry Kitchen (T12 Kiyomi)
- Low-E Glass
- Vanity (Bathroom)
- Solar Water Heater
- Canopy
- Emergency Lamp System



# Term Of Payment

KPR*	Cash Installment*
DP 15% - 20X	24X

\*TERMS & CONDITIONS APPLIED

# Promo For Customer

AC FOR ALL BEDROOMS \*

LEAKAGE WARRANTY \*

VOUCHER FURNITURE \*

SPECIAL DISCOUNT \*

\*TERMS & CONDITIONS APPLY





Demi Kenyamanan & Keamanan  
Kami Menerapkan **6M**

1. Memakai *Double Mask*
2. Menjaga jarak
3. Mencuci tangan dengan sabun
4. Menggunakan *Hand Sanitizer* secara berkala
5. Mensterilisasi semua area kerja
6. Mengecek suhu tubuh sebelum bekerja





**BSD DIAMOND  
DEVELOPMENT**

Joint Venture of **TREI** TANGERANG REALTY INVESTMENT  
a subsidiary of  **Mitsubishi Corporation**

Member of

 **sinar mas land**  
Building for a better future