



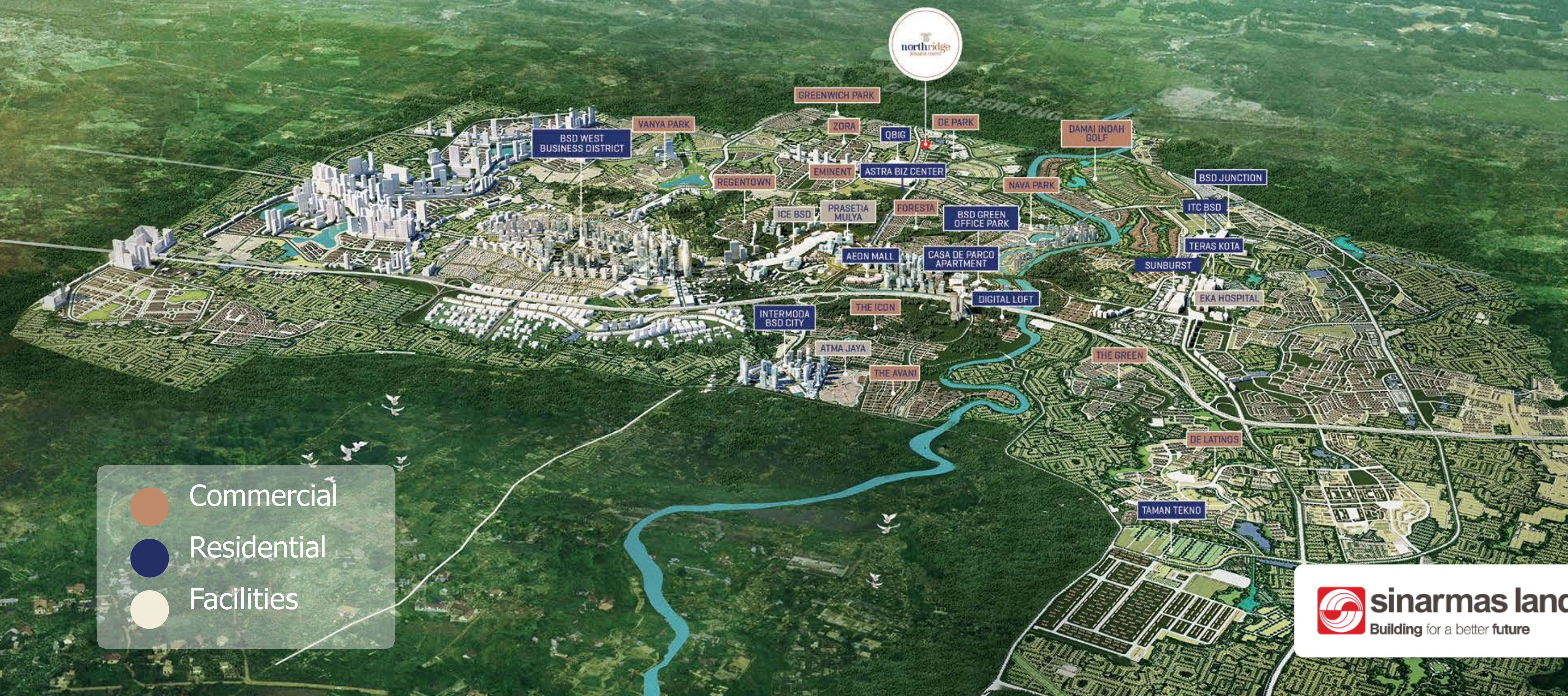
northridge

BUSINESS CENTER





Introducing
the **N**ext Gen BUSINESS CENTER



-  Commercial
-  Residential
-  Facilities

northridge
BUSINESS CENTER






northridge
BUSINESS CENTER

remarkable value & splendid location

Strategic Location

Main Boulevard

Surrounded by

Residentials Huge

Captive Market

 **sinar mas land**
Building for a better future

Located right in the heart of BSD's busiest main boulevard, Northridge Business Center is the perfect place for you to start your business or opening a new branch office.





Surrounded by a total of more than

9,209

lively residential homes, Northridge Business Center is the ideal place. Imagine what this huge captive market can do for your business.

EMINENT
1429

DE PARK
696

TABEBUYA
1048

NAVAPARK
964

MOZIA
880

FORESTA
1700

FLEEKHAUZ
447

and many more...

GREENWICH
1598

JADEITE
124

ZORA
323



Main Boulevard

Located right in the heart of BSD's busiest Main Boulevard, Northridge Business Center is the perfect place for you to start your business or opening a new branch office.

Northridge Business Center is designed with Modern Architectural and Good Quality Materials.

Potential Market



Live



32.000
Houses Built

450.000
Total Population

Learn



145.000
Students

- 46 Primary
- 30 Junior
- 18 Senior
- 12 Vocational

6.200
4 Universities
Prasetiya Mulya, Binus,
Atmajaya, Monash

Work



CBD
55 Ha

ICE

22 Ha, 10 exhibitions,
29 meeting rooms

BSD GOP
25 Ha

SUNBURST
BNI, BRI, BFI etc

Unilever
Traveloka
Apple R&D

Digital Hub
25 Ha

Residential



9.914
units

Apartment



3.716
units

Offices



>500
companies

University



> 6.200
students

sumber : informasi ini dikumpulkan dari berbagai data dan sumber berita

The Product

UNLIMITED POSSIBILITIES

Start Ups | Distributors | Offices |
Study Courses | Convenience Store |
Beauty Clinics | Insurance | Pet Shops |
Property Agents | Laundry | F & B
Financial Institutions & Banking |
Design Studios | Health Centers





Modern Architecture Design




northridge
BUSINESS CENTER



Main Gate


northridge
BUSINESS CENTER



Inner Road ROW 13


northridge
BUSINESS CENTER



3D Section



northridge
BUSINESS CENTER



ROOF FLOOR
+11.50

3.75 M

2ND FLOOR
+7.75

3.75 M

1ST FLOOR
+4.00

4.0 M

GROUND FLOOR
±0

5 M
AREA PARKIR

6 M
SIRKULASI
KENDARAAN

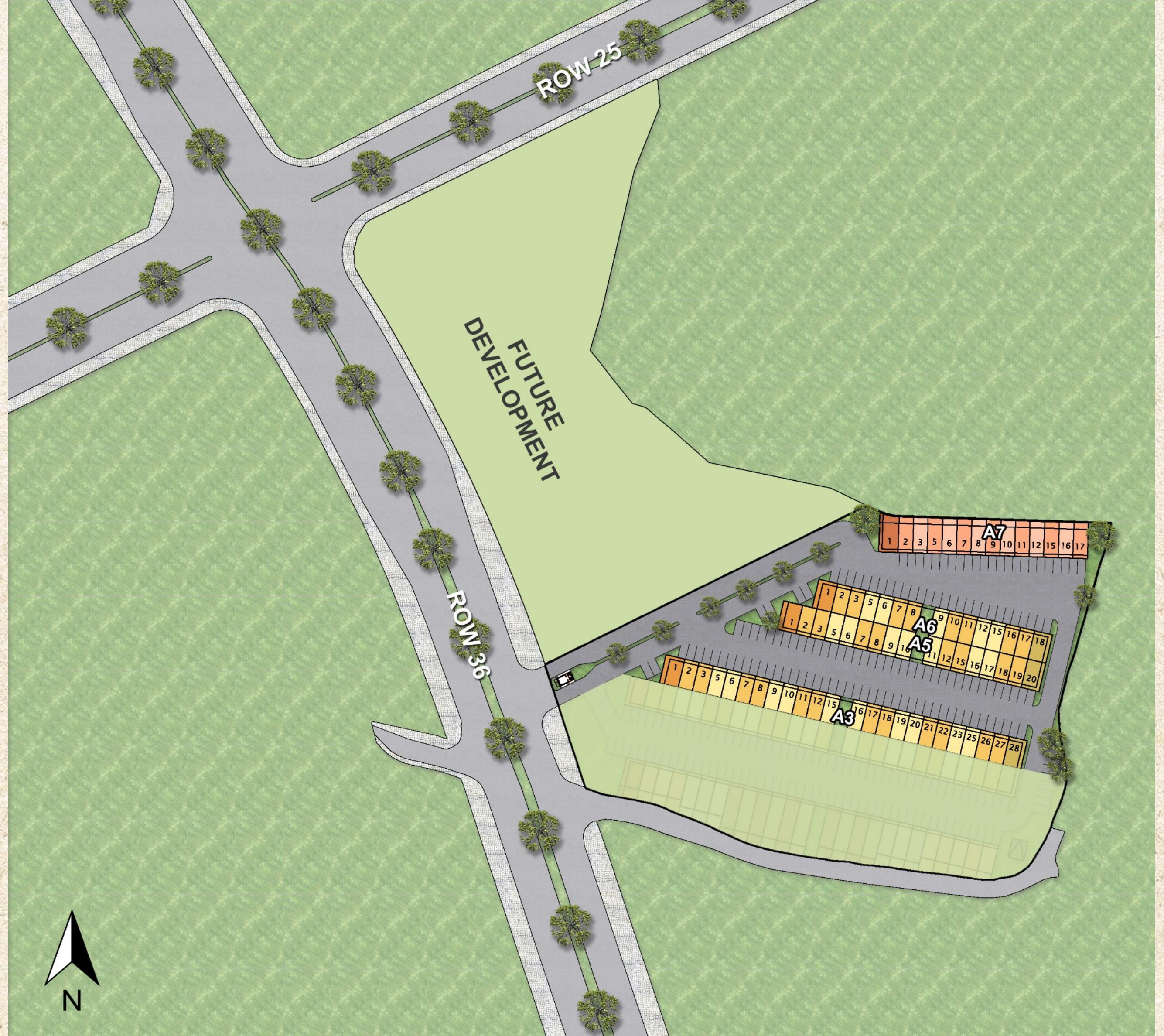
5 M
AREA PARKIR

1.2 M
TERAS

7.8 M
UNIT RUKO

Blokplan

Siteplan



TIPE A/D

TIPE B

TIPE B

TIPE C

TIPE C

TIPE B

TIPE B

TIPE C

TIPE C

TIPE B

TIPE B

TIPE C

TIPE C



Blok A3-A6

TIPE A / D

TIPE B

TIPE C

TIPE B

TIPE C

TIPE B

TIPE C

TIPE B

TIPE C

TIPE B

TIPE C

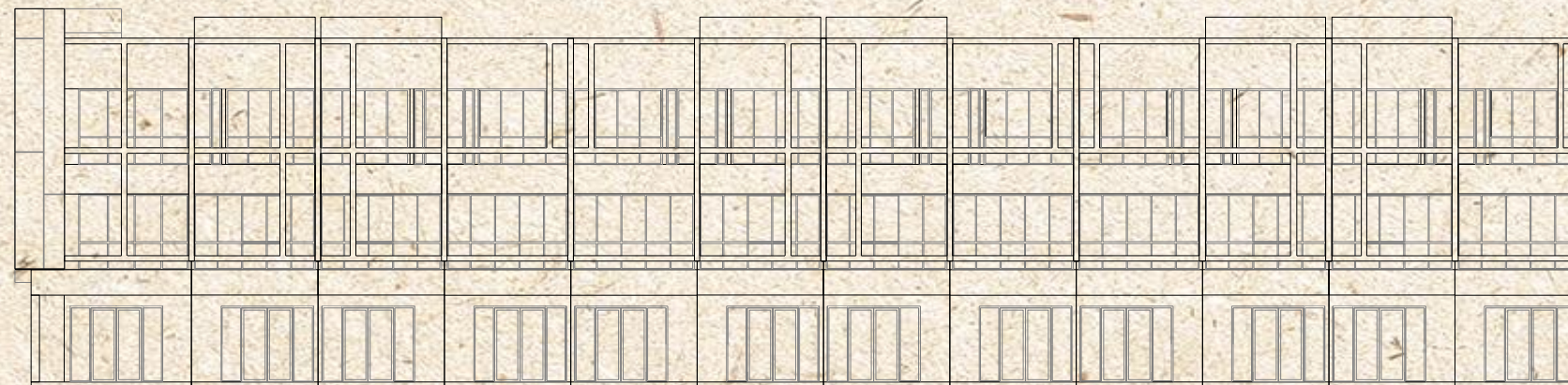
TIPE B

TIPE C

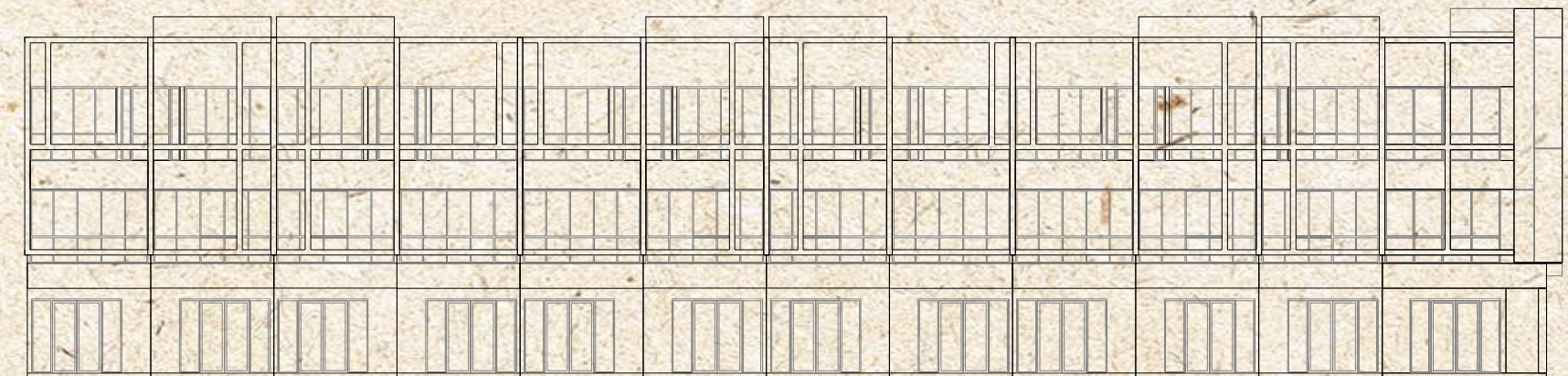
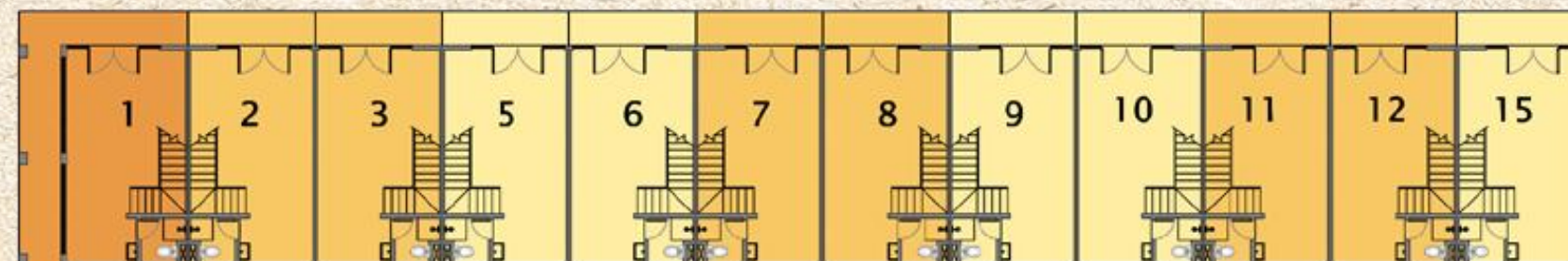


Blok A7

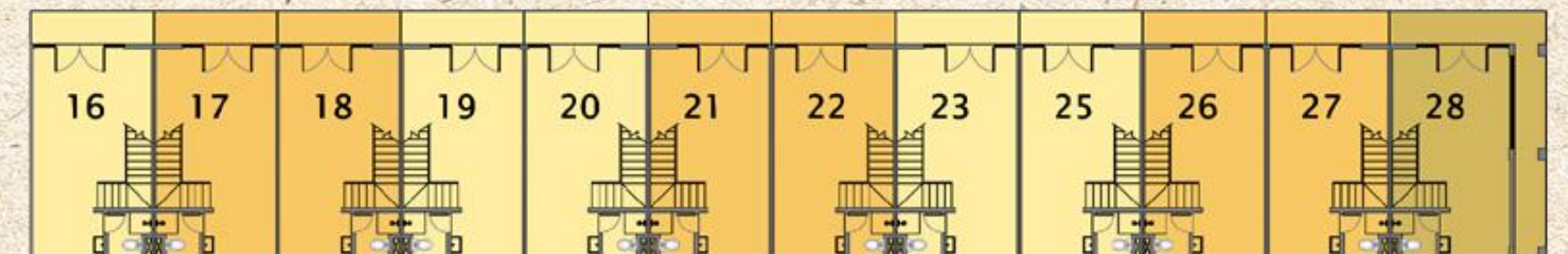
Blok A3



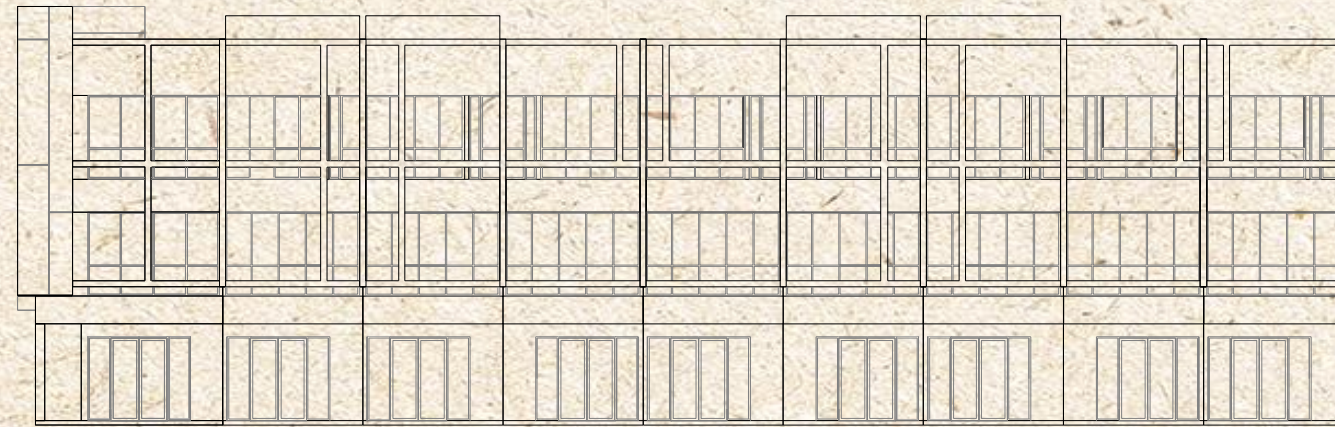
Type A Type B Type B Type C Type C Type B Type B Type C Type C Type B Type B Type C'



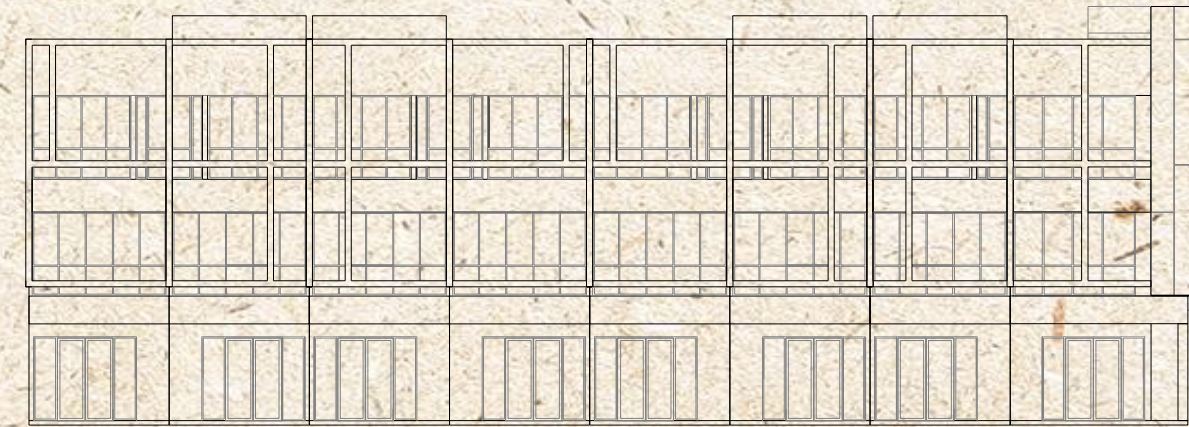
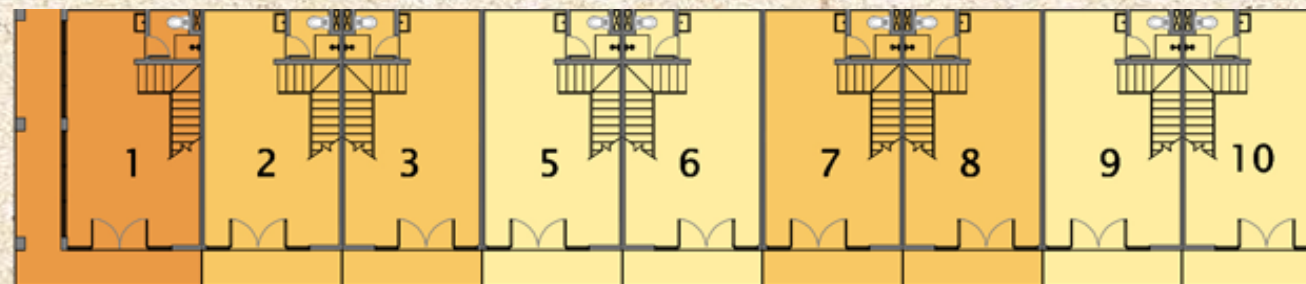
Type C' Type B Type B Type C Type C Type B Type B Type C Type C Type B Type B Type D



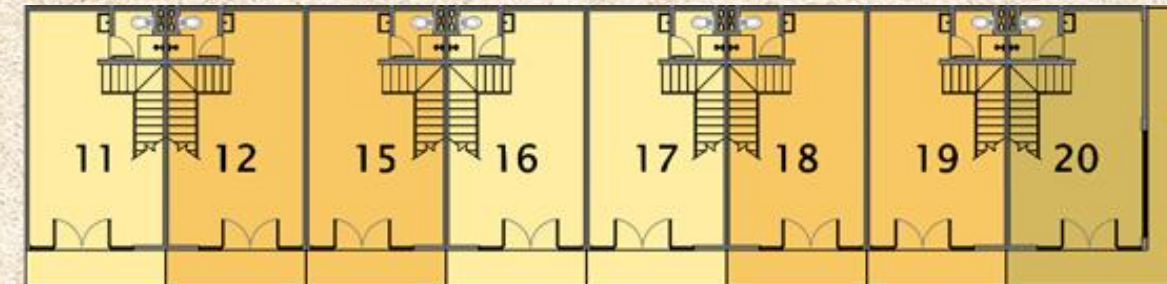
Blok A5



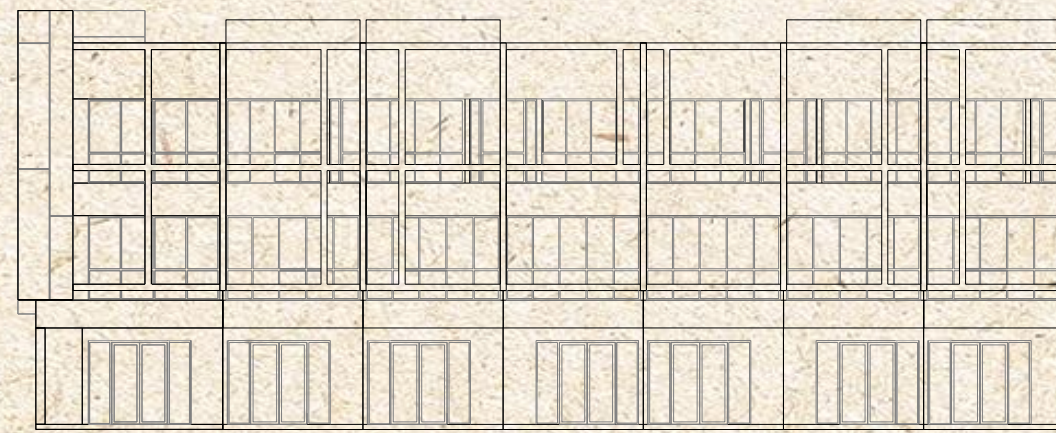
Type A Type B Type B Type C Type C Type B Type B Type C Type C'



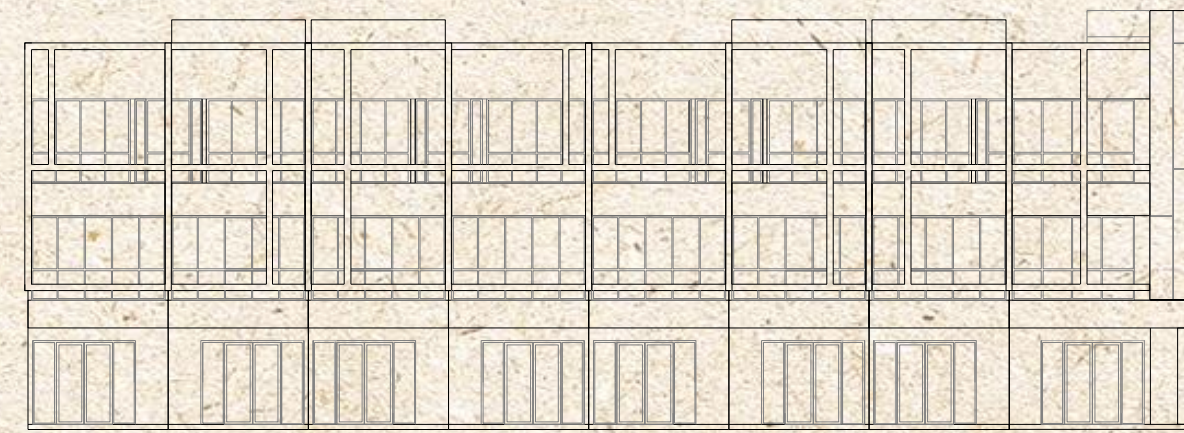
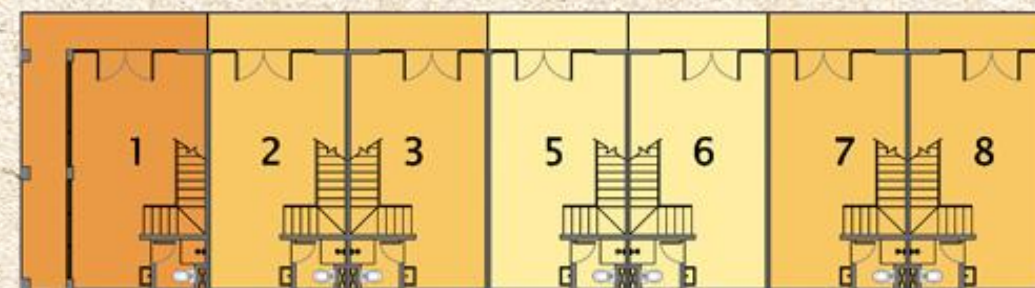
Type C' Type B Type B Type C Type C Type B Type B Type D



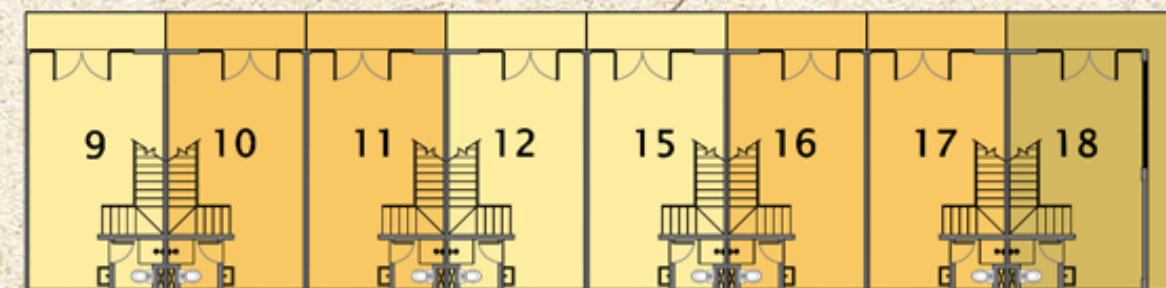
Blok A6



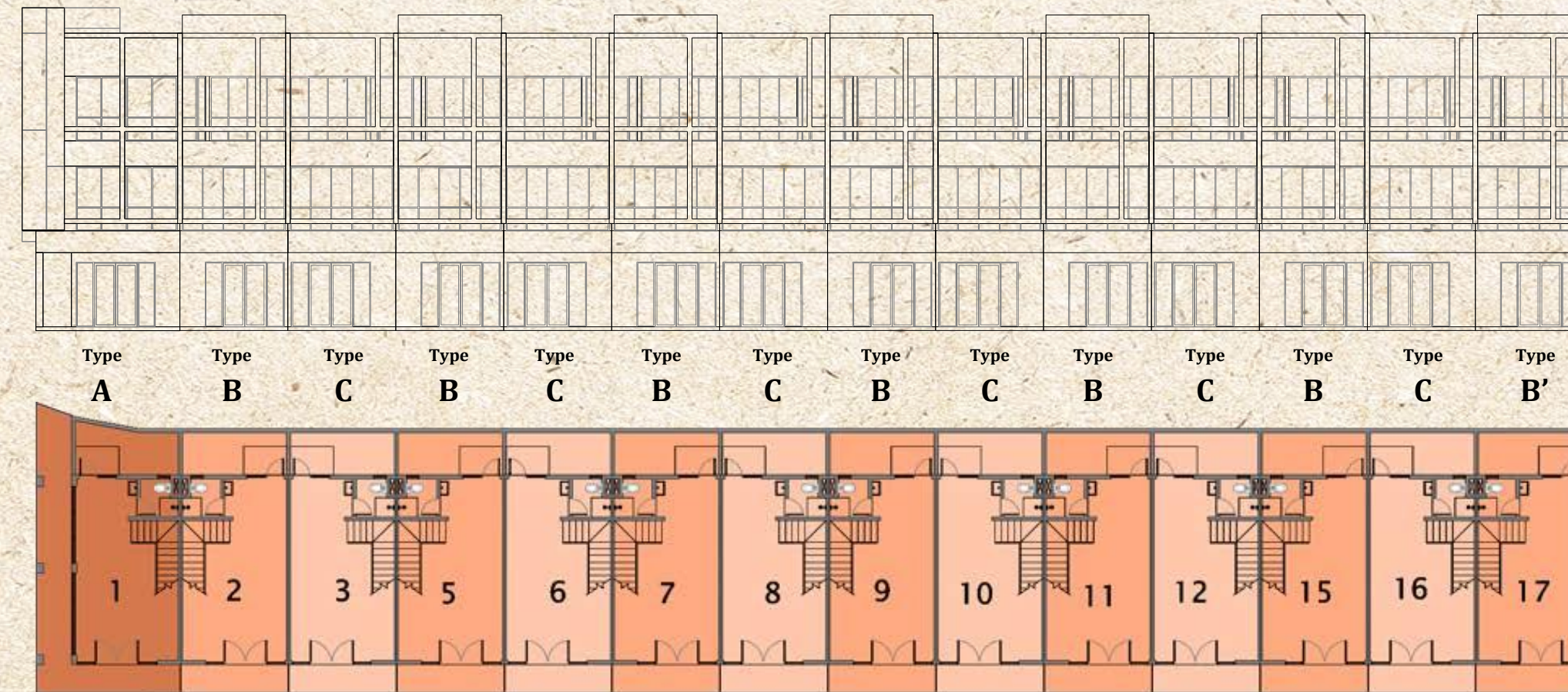
Type A Type B Type B Type C Type C Type B Type B'



Type C' Type B Type B Type C Type C Type B Type B Type D



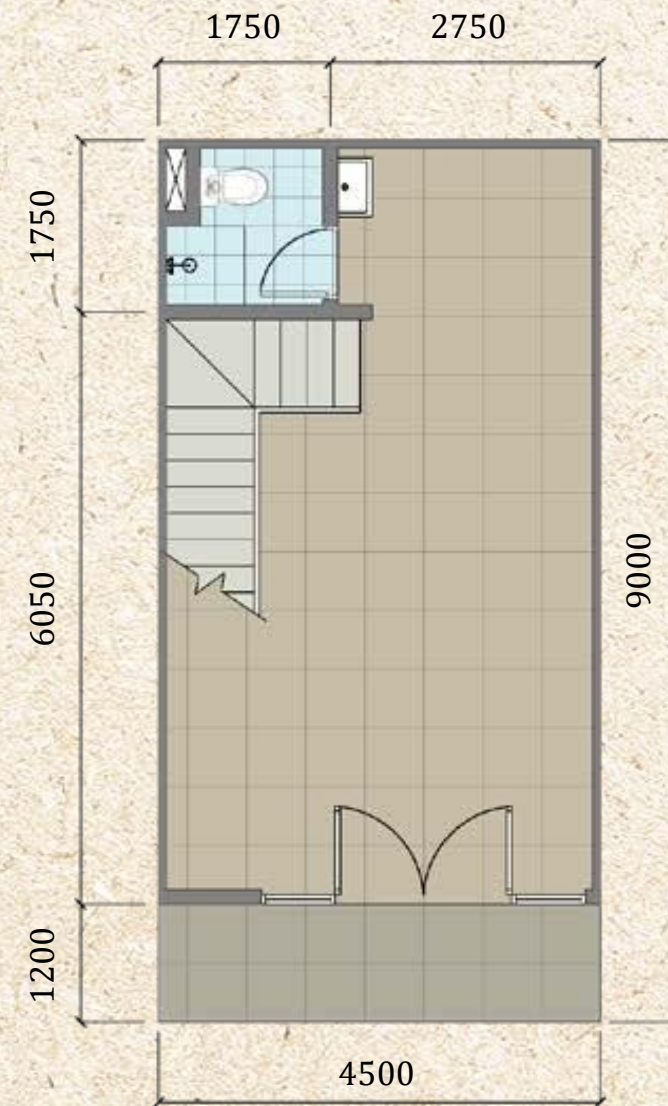
Blok A7



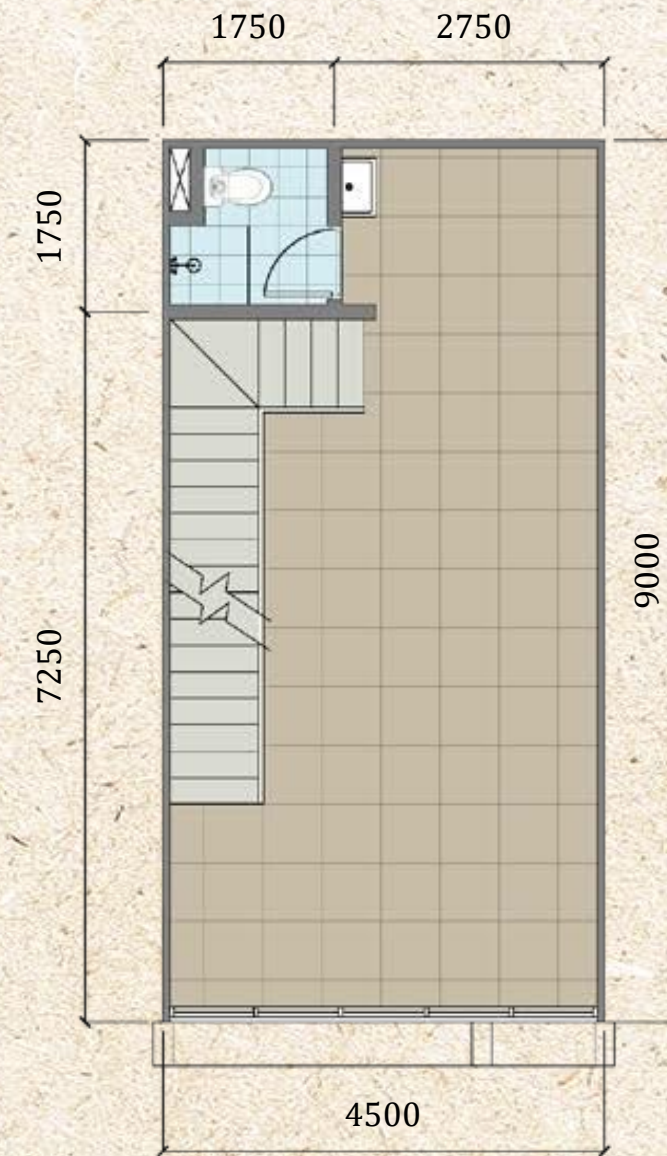
Floorplan

Type B'/C'

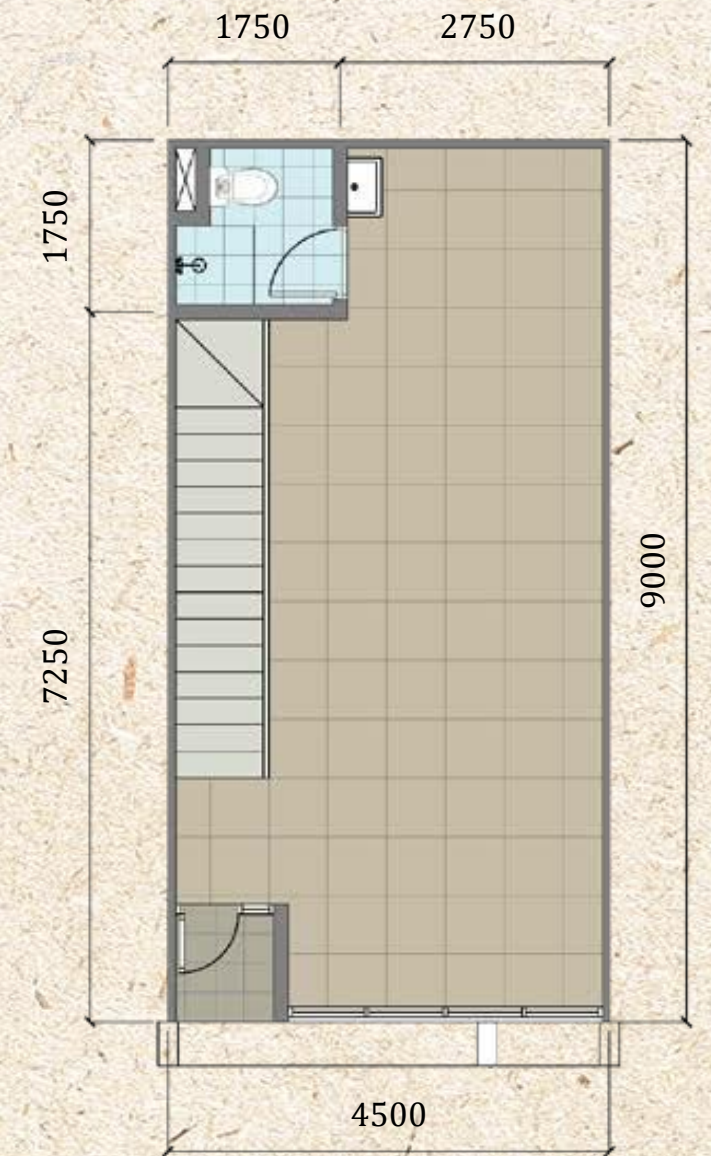
STD 4,5X9



DENAH LANTAI
DASAR
SKALA 1:100



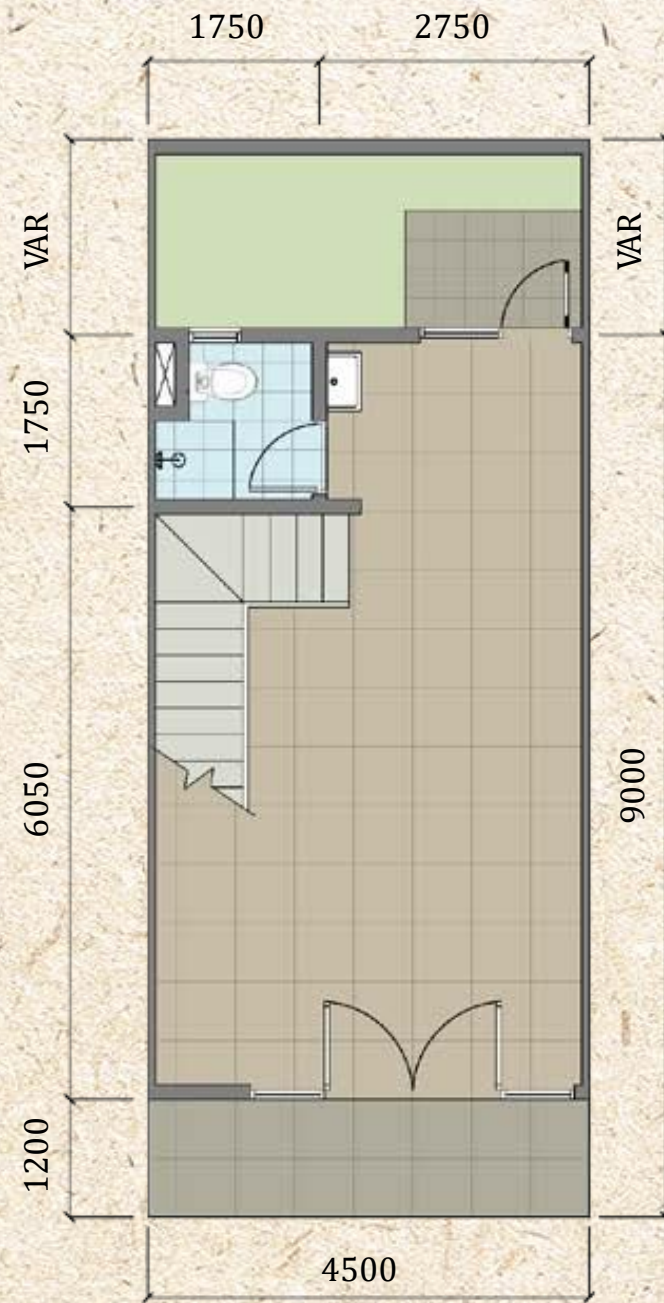
DENAH LANTAI
SATU
SKALA 1:100



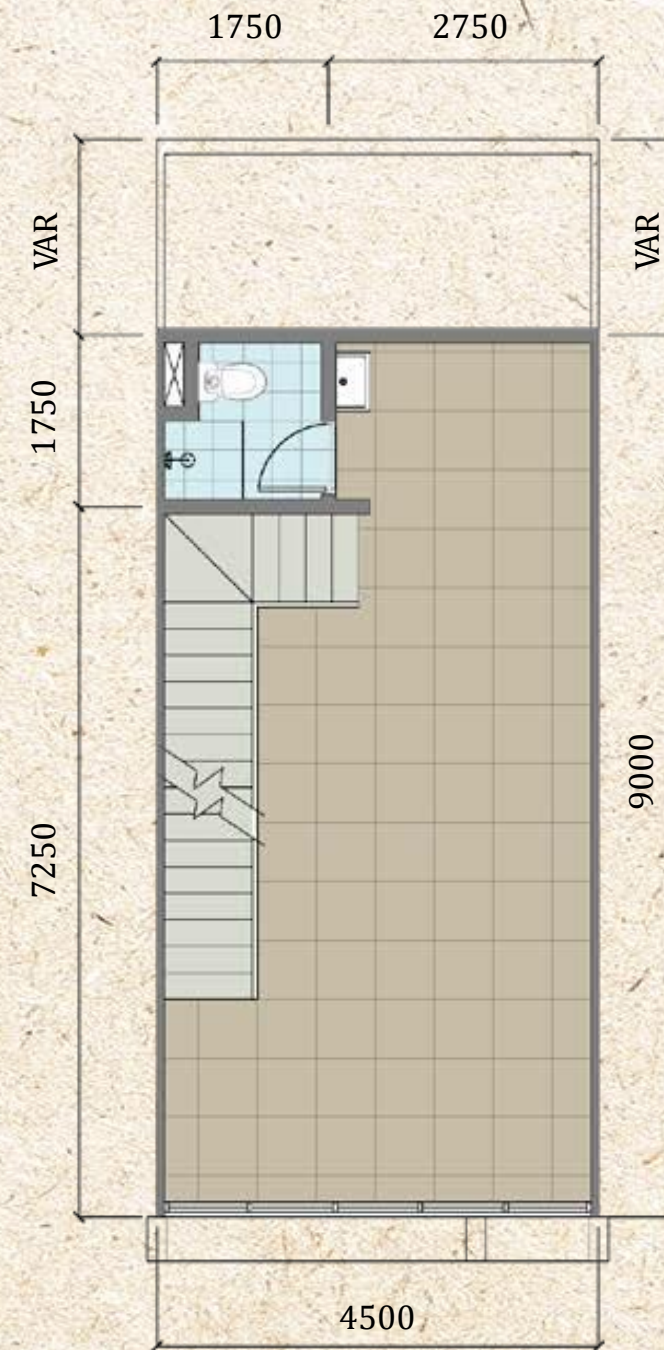
DENAH LANTAI DUA
SKALA 1:100

Type B'/C'

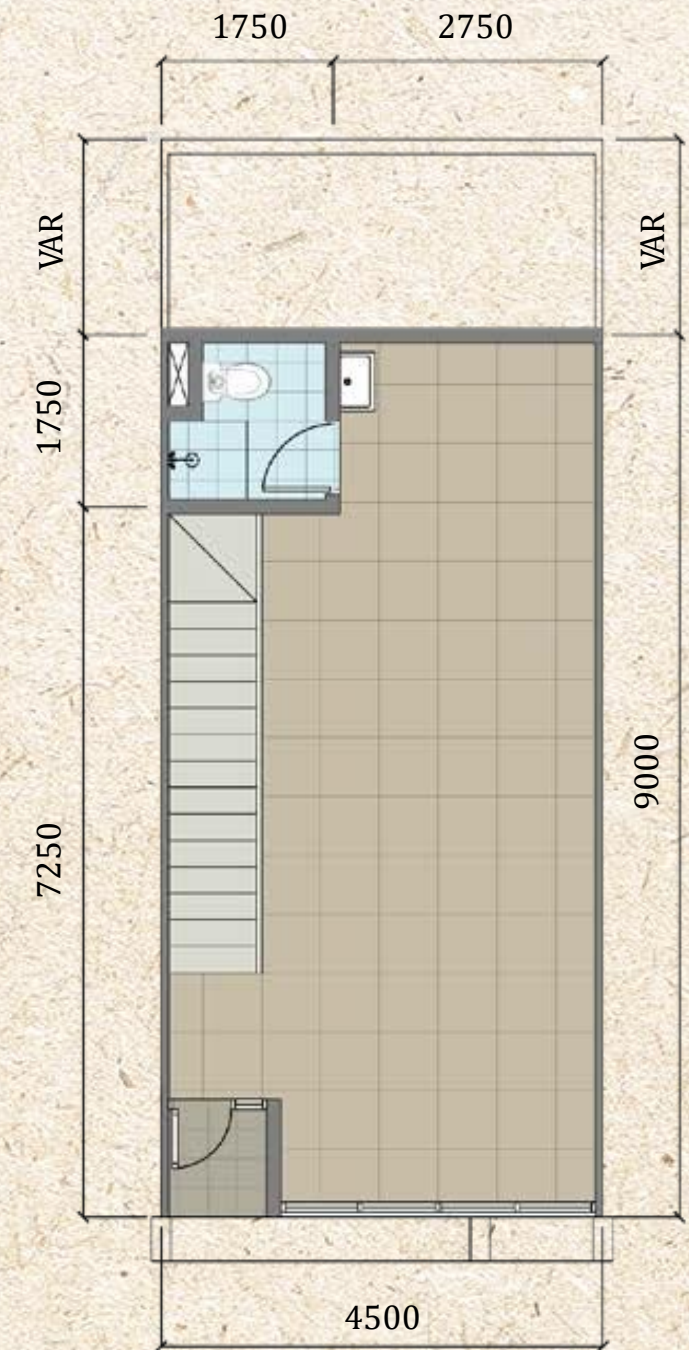
STD 4,5X9+VAR



DENAH LANTAI
DASAR
SKALA 1:100



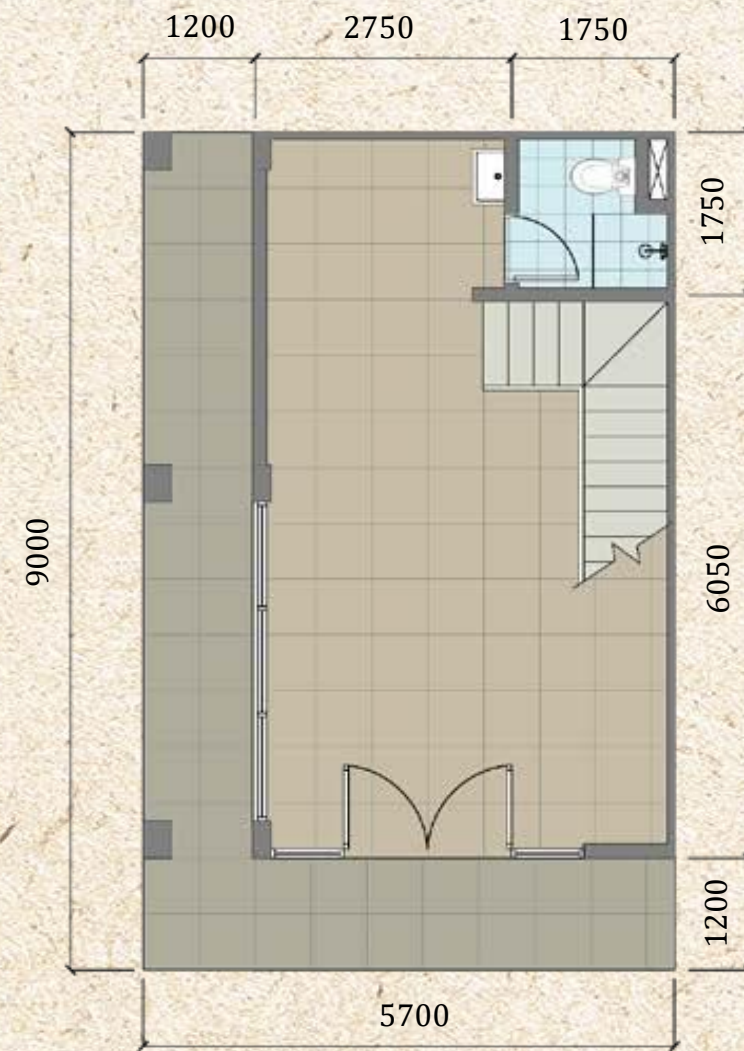
DENAH LANTAI
SATU
SKALA 1:100



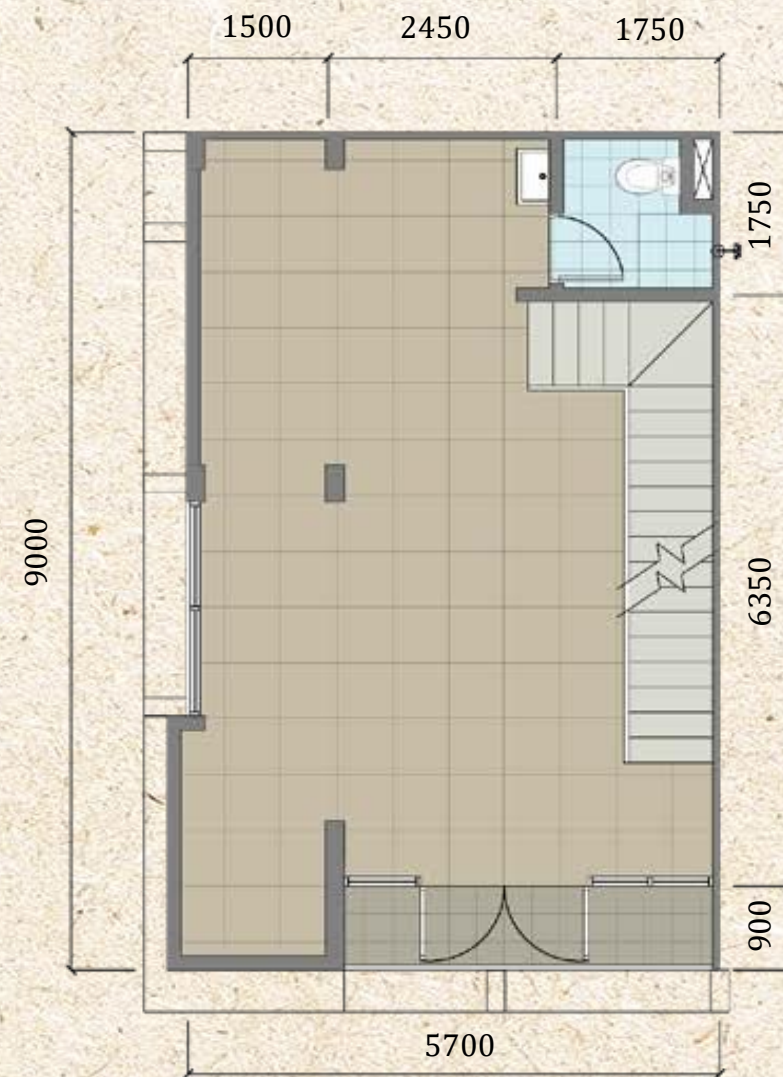
DENAH LANTAI
DUA
SKALA 1:100

Type D

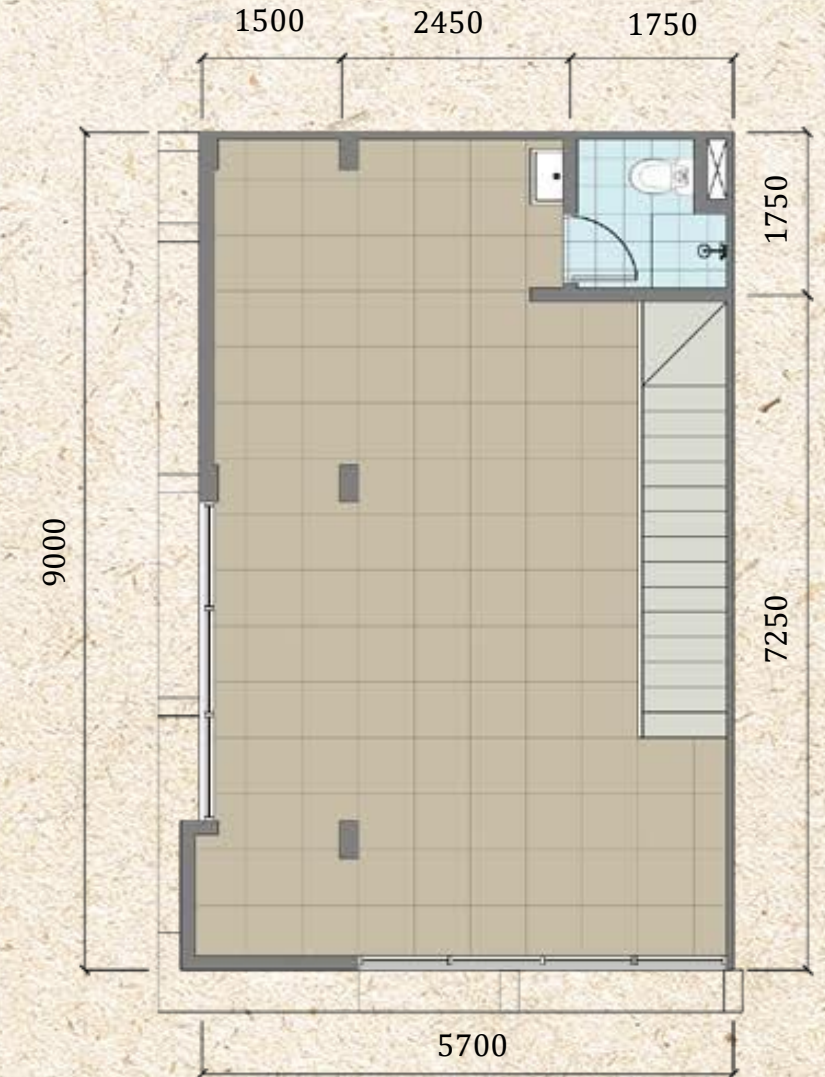
HOOK 5,7x9



DENAH LANTAI DASAR
SKALA 1:100



DENAH LANTAI SATU
SKALA 1:100



DENAH LANTAI DUA
SKALA 1:100

Type A

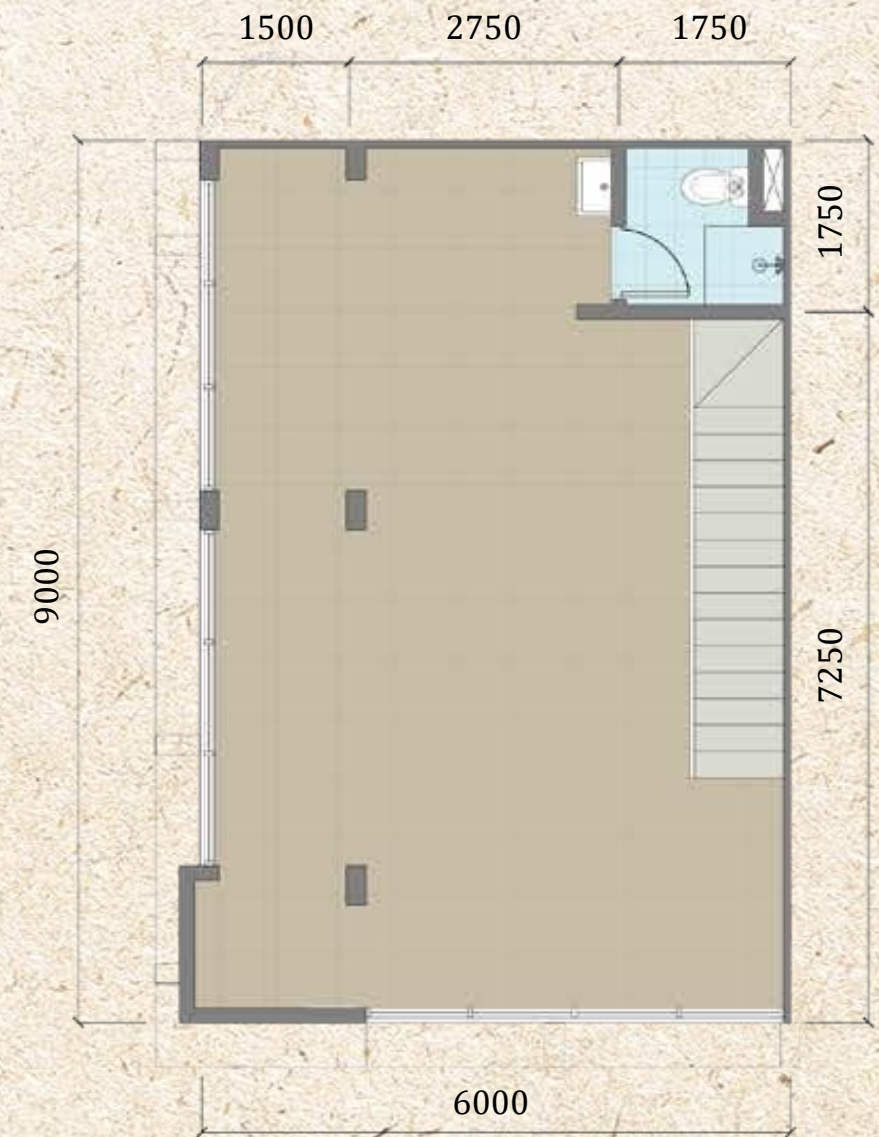
HOOK 6X9



DENAH LANTAI DASAR
SKALA 1:100



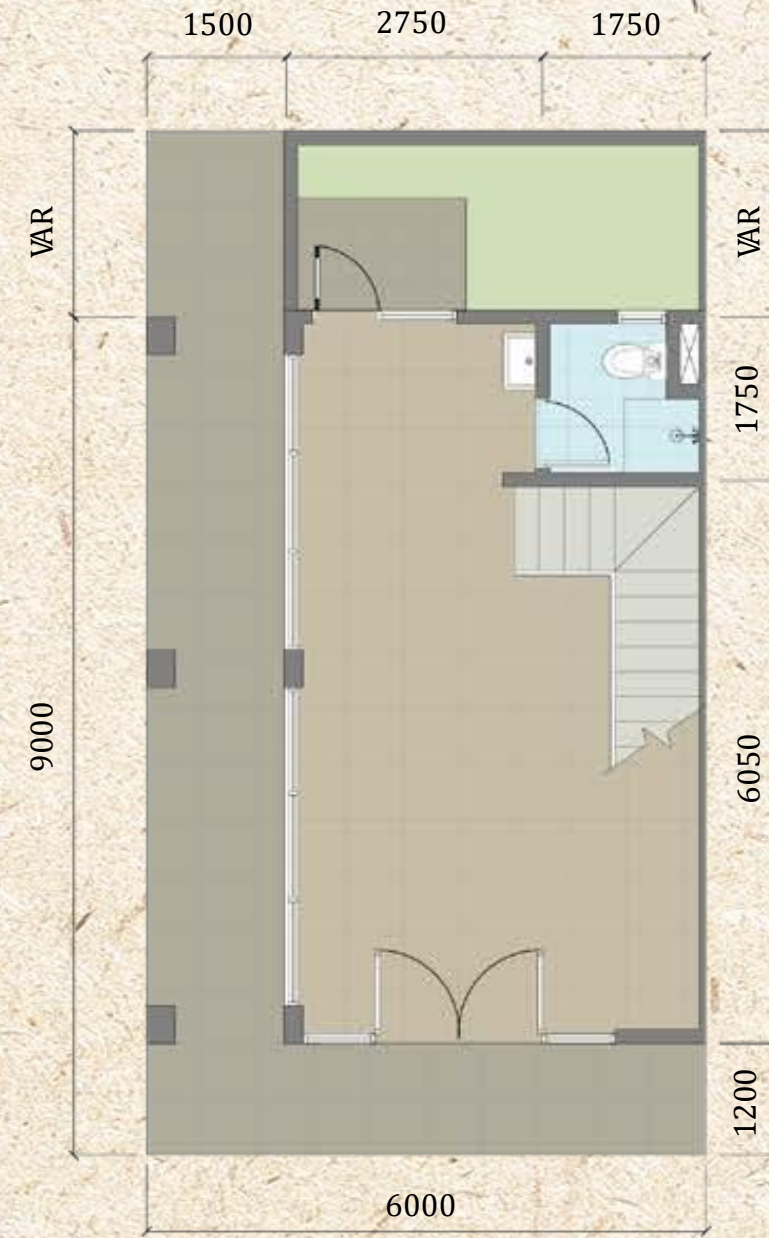
DENAH LANTAI SATU
SKALA 1:100



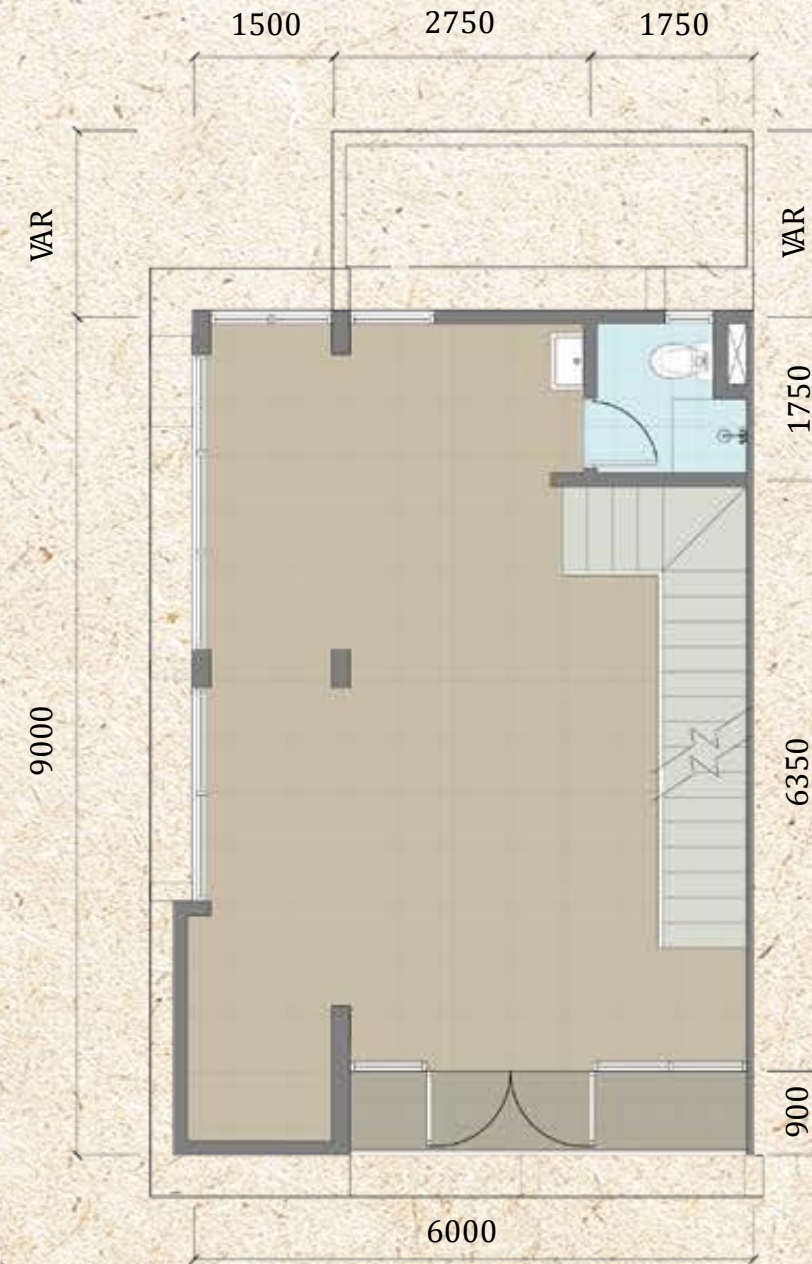
DENAH LANTAI DUA
SKALA 1:100

Type A'

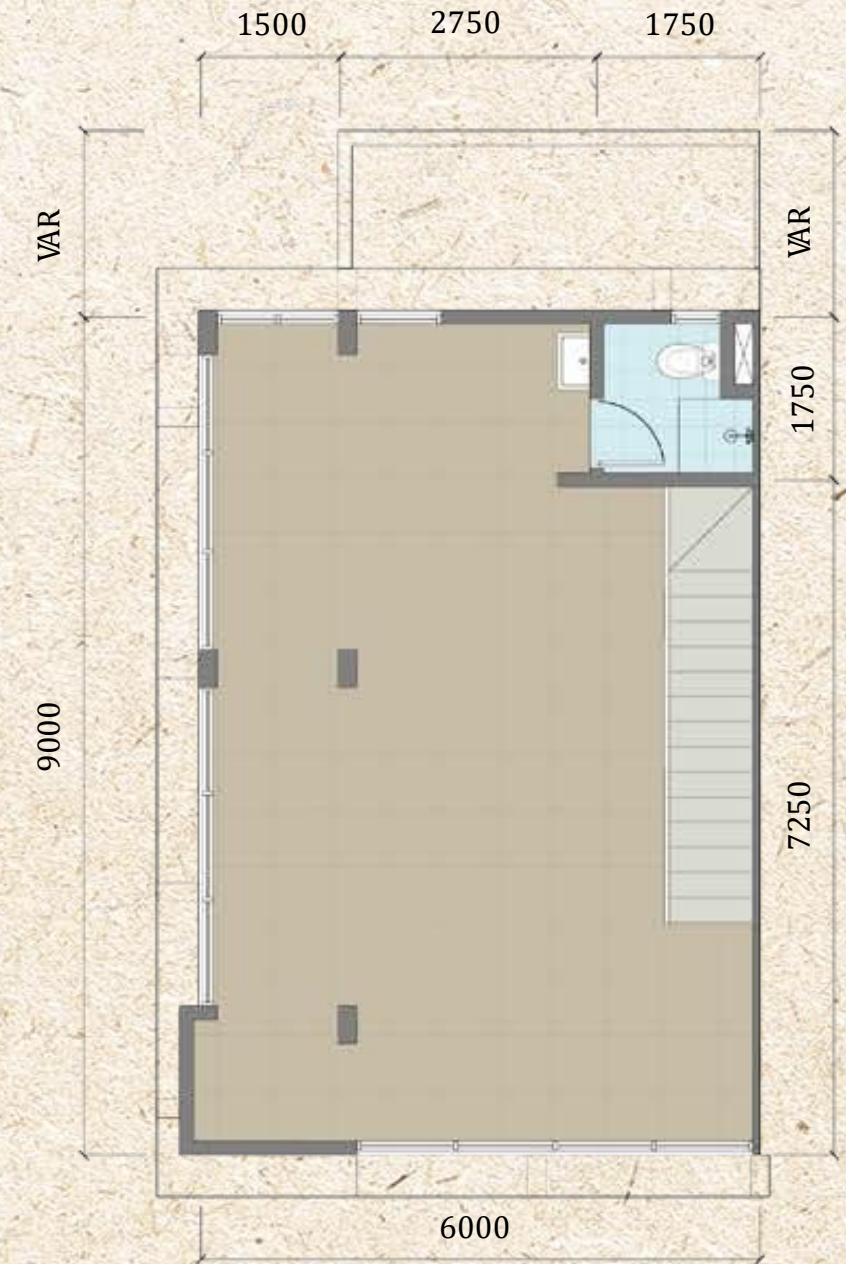
HOOK 6X9+VAR



DENAH LANTAI DASAR
SKALA 1:100



DENAH LANTAI SATU
SKALA 1:100



DENAH LANTAI DUA
SKALA 1:100

Specifications

Foundation

Pile Foundation : Mini Pile

Flooring

Terrace : Non-slip Homogeneous Tile

Indoor Area : Homogeneous Tile

Toilet : Non-slip Homogeneous Tile

Interior Wall Finish : Plester and paint

Ceiling : Gypsum board

Roof : Corrugated zincalume with
lightweight steel structure

Door & Window

Main Entrance Door : Aluminium frame with glass

Window : Aluminium frame with glass

Facade : Aluminium frame with glass
Homogeneous tile

Sanitary : American Standard /equivalent

Electricity : 3.500 VA

Internet Network : Fiber Optic

Water Supply : PAM

Key Highlights

BEST LOCATION

- Main Boulevard ROW 36
- High Traffic
- Surrounded by Premium Residentials

GREAT ACCESSIBILITY

- 5 Minutes to Future Toll Serpong - Balaraja

MODERN DESIGN

- Modern Façade Design
- Wide Window Opening

POTENTIAL MARKET

- Premium Residentials
- National-Multinational Company Offices
- Universities

HIGH VALUE INVESTMENT

- Start from 2,2M-an



Thank You