

coming home to pure living



# Location

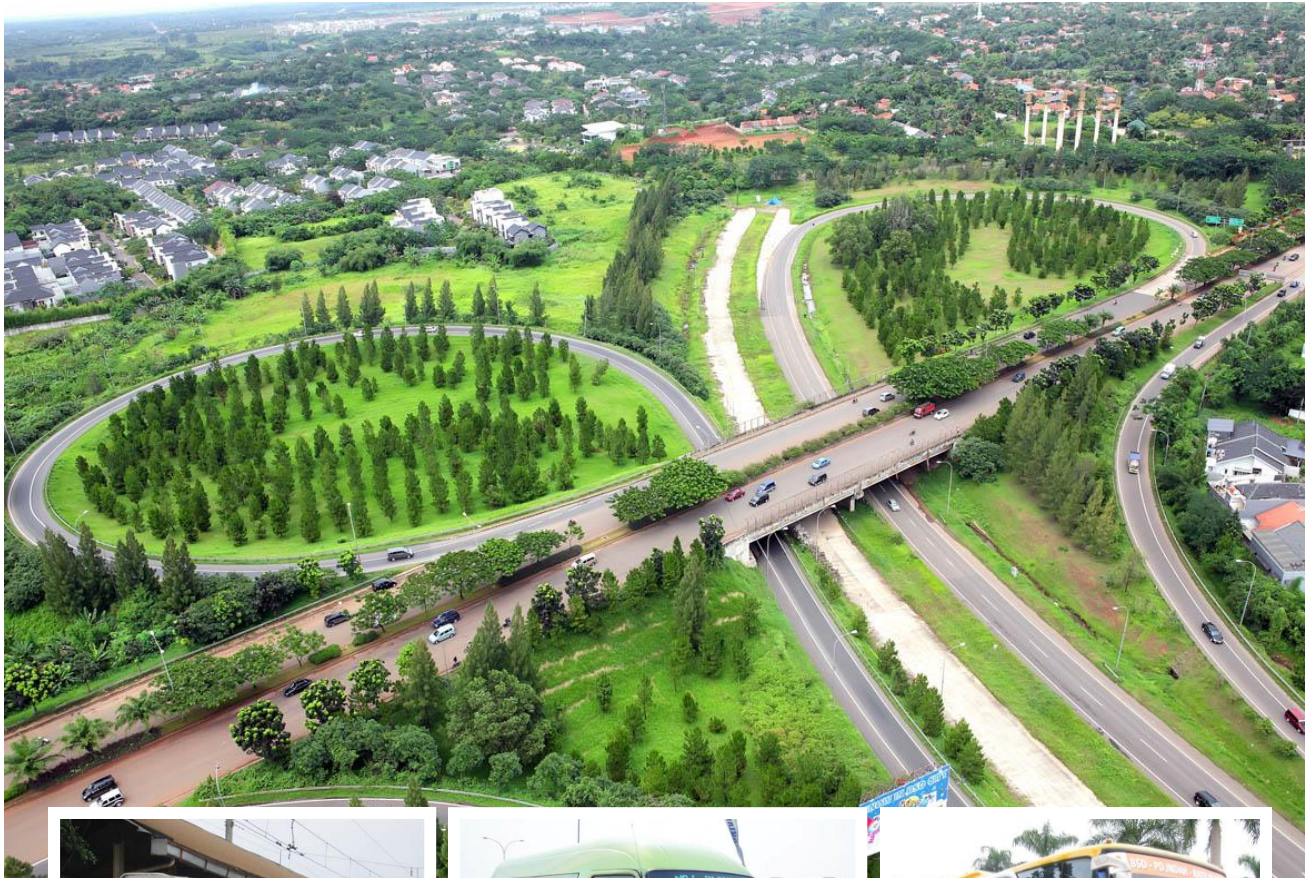


**akasa**  
PURE LIVING

coming home to pure living

**akasa**  
PURE LIVING

# Accessibility



Akasa Pure Living memiliki akses langsung keseluruhan jalan tol utama di wilayah Jabodetabek dan menawarkan akses mudah ke layanan kereta api dan bus



coming home to pure living

**akasa**  
PURE LIVING

# Surroundings



**EKA HOSPITAL**



**SUNBURST  
OFFICE PARK**



**TERAS KOTA**



**OCEAN PARK**



**SANTA URSULA  
SCHOOL**



**BSD SQUARE**



**MODERN  
MARKET**



**AL AZHAR  
SCHOOL**

coming home to pure living

**akasa**  
PURE LIVING

# Surroundings



**AUTOPARTS**



**PRASETIYA  
MULYA**



**THE BREEZE**



**SGU**

coming home to pure living

**akasa**  
PURE LIVING

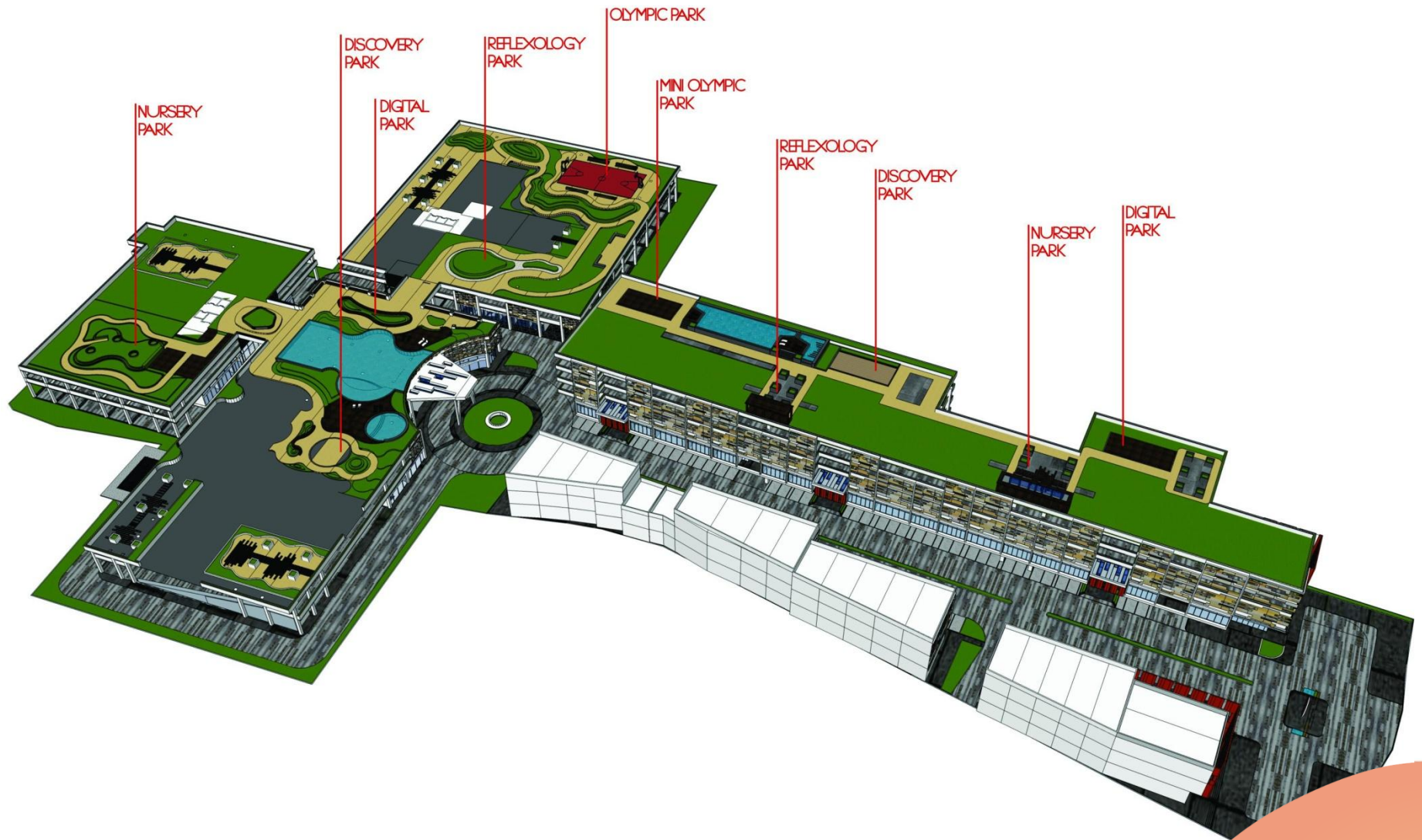
# Block Plan



coming home to pure living

**akasa**  
PURE LIVING

# Concept



coming home to pure living

**akasa**  
PURE LIVING

BEV



coming home to pure living

**akasa**  
PURE LIVING



BEV



coming home to pure living

**akasa**  
PURE LIVING

# Main Entrance



coming home to pure living

**akasa**  
PURE LIVING

# Drop Off Zone



coming home to pure living

**akasa**  
PURE LIVING

# Arcade



coming home to pure living

**akasa**  
PURE LIVING

# Thematic Swimmingpool



coming home to pure living

**akasa**  
PURE LIVING

# Modern Facilities



- Commercial Retail
- Arcade
- Thematic Swimming Pool
- Children Playground
- Jogging Track
- Fitness
- Sky & Roof Garden
- 24 Hour Security
- Discovery Park
- Nursery Park
- Digital Park
- Reflexology Park
- Olympic Park
- etc



coming home to pure living

**akasa**  
PURE LIVING

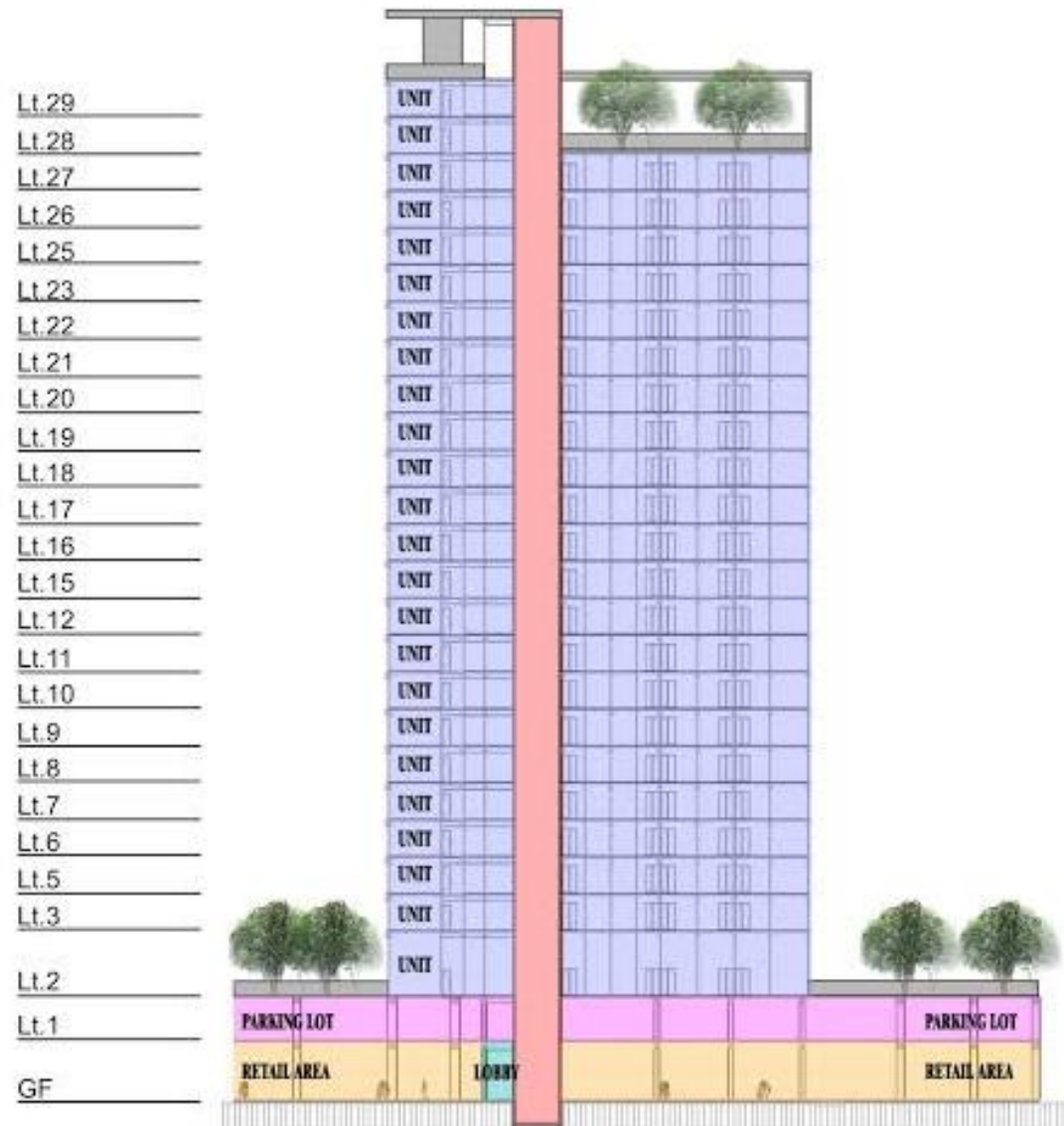
# Block Plan



coming home to pure living

**akasa**  
PURE LIVING

# Prespektif

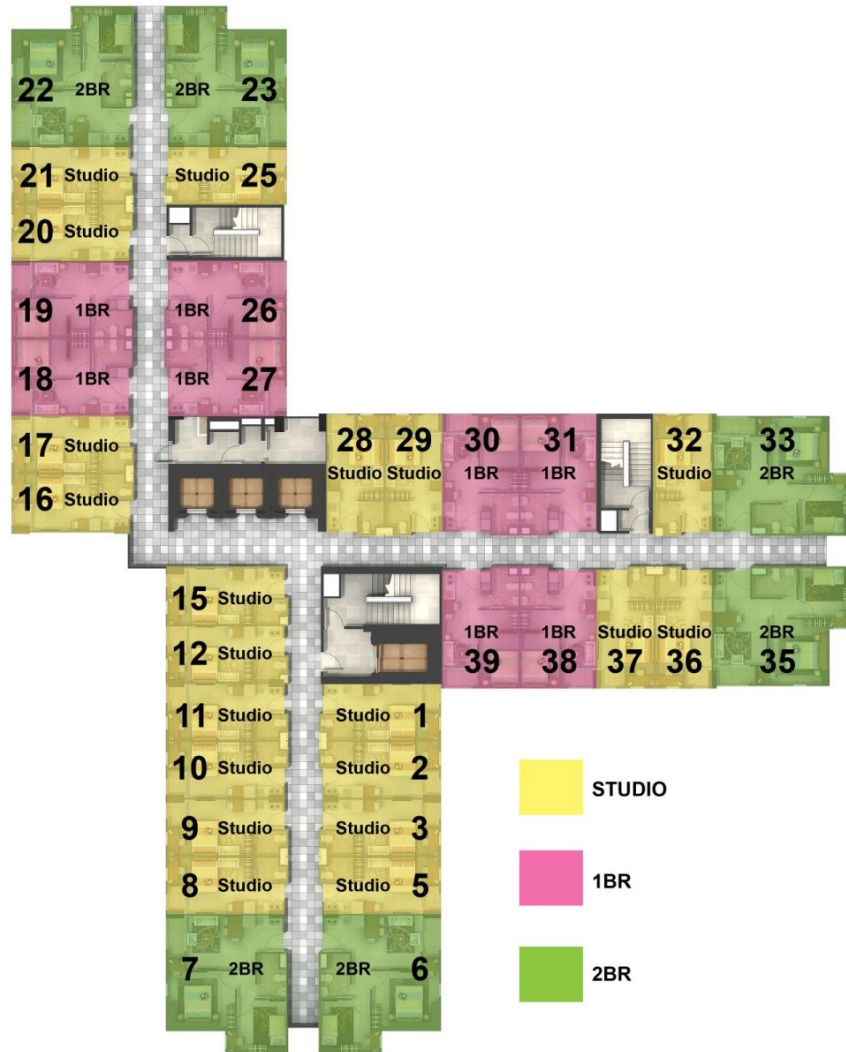


coming home to pure living

**akasa**  
PURE LIVING



# Floorplan (typical)



## Lantai 3 – 27

Studio : 20 unit

1 BR : 8 unit

2 BR : 6 unit +

Total : 34 unit

coming home to pure living

# Floorplan (typical)



## Lantai 28 – 29

Studio : 17 unit

1 BR : 4 unit

2 BR : 4 unit +

Total : 25 unit

coming home to pure living

# Studio



Semi Gross : 22.86 m<sup>2</sup>

Nett Area : 18.18 m<sup>2</sup>

coming home to pure living

**akasa**  
PURE LIVING

# 1 BR



Semi Gross : 30.46 m<sup>2</sup>

Nett Area : 24.23 m<sup>2</sup>

coming home to pure living

**akasa**  
PURE LIVING

## 2 BR



Semi Gross : 51.03 m<sup>2</sup>

Nett Area : 40.59 m<sup>2</sup>

coming home to pure living

**akasa**  
PURE LIVING

# Spesifikasi

Dinding	: Bata ringan dan panel beton precast dicat
Plafond	: Beton expose dan gypsum dicat
Jendela	: Kaca polos bening, rangka alumunium
Pintu Utama	: Engineered door
Lantai	: Roman/setara
Lantai/Dinding Toilet	: Roman/setara
Sanitasi	: Toto/setara
Listrik	: Studio 1300 VA
	1 KT 1300 VA
	2 KT 2200 VA
Air	: PDAM

coming home to pure living

**akasa**  
PURE LIVING